

Safeguards Monitoring Report

8th Semi-annual Report

Project No. 49450-021

Status: FINAL

January to June 2025

Kiribati: South Tarawa Renewable Energy Project (STREP)

Prepared by: Public Utilities Board, STREP Project Management Unit for the
Government of Kiribati and Asian Development Bank

Document Control

Document	Semi-annual Safeguards Monitoring Report 2025
File Location	PUB
Project Name	South Tarawa Renewable Energy Project
Project Number	49450-021
Revision Number	#001

Revision History

Revision No	Date	Prepared by	Reviewed by	Endorsed for Issue by
Draft 01	21/07/24	PMU		

This safeguards and gender monitoring report is a document of the recipient. The views expressed herein do not necessarily represent those of ADB's Board of Directors, Management, or staff, and may be preliminary in nature.

In preparing any country program or strategy, financing any project, or by making any designation of or reference to a particular territory or geographic area in this document, the Asian Development Bank does not intend to make any judgments as to the legal or other status of any territory or area.

Table of Contents

1. Executive Summary	6
Project Overview	8
Project Background and Information.....	8
Project Location.....	10
Project Safeguards Categorization and Approval	11
Safeguards Implementation Arrangements.....	12
Safeguards Legal Requirements	16
Project Safeguards Progress.	17
Environmental Safeguards.	19
Social safeguards:.....	21
Consultations and Information Disclosure.	23
Grievance Redress Mechanism	24
Compliance to Safeguard-Related Covenants	25
Conclusions and Future Activities	31
ANNEX:	33
Annex 1a: Environmental and Social Performance Monitoring –Pre-construction to construction phase –January – June 2025	33
Annex 1b. Audit Findings Justification Report.....	37
Annex 2: Incidents Reports.....	38
Annex 3: Importation and Quarantine Permits.	45
Annex 4: Consultation reports.	49
4a: SEP update	49
4b: Consultation.	53
Annex 5: Bwabwai pit extraction records and total compensation.....	67
ANNEX 5: Grievances Redress Mechanism and Interactions.....	68
Annex 6: Audit Outcome letter QTR1	77

List of tables:

Table 1: Project Safeguards Implementation Arrangements	13
Table 2: Safeguards: Identified risks, corrective Actions and Status.	17
Table 3: Environmental Safeguard Activities for January - June 2024.....	20
Table 4: Summary of Social Safeguards Activities January - June 2024.....	22
Table 5: Status in compliance of Safeguards related covenants.....	25

Figure 1: Proposed delineation of 13 ha area (White boundary) for current and future Solar PV Developments Note: Proposed layout of PV Solar Array under STREP (in clay red) comprising 5.3 ha, and the exclusion of an area in the middle containing the informal settler household's dwellings and cemetery. 11

ABBREVIATIONS

ADB	Asian Development Bank
ALD	Agriculture and Livestock Division (within MELAD)
AP	Affected People
BESS	Battery Energy Storage System
BWR	Bonriki Water Reserve
CAP	Corrective Action Plan
CCP	Communication and Consultation Plan
CCR	Compensation Completion Report
CEMP	Construction Environmental Management Plan
CSS	Country Safeguards System
DDR	Due Diligence Report
ECD	Environment and Conservation Division (within MELAD)
EIA	Environmental Impact Assessment report (as per the CSS)
EL	Environmental License
EMP	Environmental Management Plan
ETPP	Enrichment Tree Planting Plan
GRM	Grievance Redress Mechanism
HSP	Health and Safety Plan
IEE	Initial Environment Examination
LMD	Land Management Division (within MELAD)
MELAD	Ministry of Environment, Lands and Agricultural Development
MEHR	Ministry of Employment and Human Resource
MFED	Ministry of Economic and Finance Development
OHS	Occupational Health and Safety
MISE	Ministry of Infrastructure and Sustainable Energy
O&M	Operation and Maintenance
PIC	Project Implementation Consultant
PMU	Project Management Unit
PUB	Public Utilities Board

PV	Photovoltaic
RP	Resettlement Plan
AG	Attorney General
SMR	Semi-annual safeguards monitoring report

1. Executive Summary

1. **The Project.** The South Tarawa Renewable Energy Project (STREP) is being implemented by the Government of Kiribati with support from Asian Development Bank (ADB) and other co-financers. It is the first ADB project in Kiribati's energy sector. STREP will install a solar photovoltaic generation, a battery energy storage system, and will support institutional capacity building including the development of an inclusive and gender-sensitive renewable energy enabling framework while addressing barriers to private sector investment. Specific deliverables are **(i)** the installation of 4.0 MW/5.0MWp ground-mounted solar photovoltaic (PV) capacity and 5.0MW/13 MWh of battery energy storage system (BESS), **(ii)** developing a gender-sensitive draft energy act incorporating provisions to establish clear energy sector institutional responsibilities, modernize existing law, enhance renewable energy deployment and energy efficiency, develop and improve regulations, encourage private sector investments, and reform tariffs and **(iii)** provide institutional capacity building for stakeholders including on project management and supervision, and operation and maintenance of renewable energy generation assets.
2. The PUB is the implementing agency for the solar PV plant and the Ministry of Infrastructure and Sustainable Energy (MISE) is implementing the renewable energy enabling framework component. The PUB has established a project management unit (PMU) with support from a construction supervision consultant (CSC) to oversee the implementation of the project.
3. **This Report.** The purpose of this report is to present to the Asian Development Bank (ADB) and the Government of Kiribati, the eighth South Tarawa Renewable Energy Project (STREP) Semi-annual Safeguards Monitoring Report (SMR) for Environmental and Social Safeguards covering the January to June 2025 period. Throughout this reporting period, the PMU safeguards with the support of KFSU oversaw the implementation of all safeguard matters, working closely with the PIC safeguards specialists.

- 4. Project Categorization.** The project is not expected to target or impact distinct and vulnerable groups of Indigenous Peoples, as defined by ADB's safeguard policies (SPS, 2009). Under ADB SPS 2009, this project is categorized B for involuntary resettlement, Category C for Indigenous Peoples, and Category B for the environment. Under the SPS Requirements, a Resettlement Plan and Initial Environment Examination documents were prepared for the Project.
- 5. Compliance with National and International Regulations.** The implementation of the project is governed by the applicable laws and regulations of Kiribati and the Safeguard Policy Statement 2009 (SPS) of the ADB. All relevant environmental and social regulations of Kiribati and other legislations apply to the project. As of January 2025 (reporting period), no issues have been observed around conformance to national rules and ADB Safeguard Requirements.
- 6. Environmental Safeguards Progress.** The quarterly monitoring of EMP requirements for the construction phase is ongoing. The site progressed to the construction phase with increasing monitoring frequency. Towards the end of the reporting period, work is shifted to the STWSP site; hence, work and monitoring on the STREP site are minimal. There were two environmental audits conducted by the PMU, ECD and other safeguard stakeholders in April and June 2025. A list of corrective actions was prepared and shared with the contractor for their necessary corrective actions. In June, the environmental safeguard officer was just recruited.
- 7. Social Safeguards Progress.** Ongoing RP implementation and monitoring continue for this reporting period. As the project continues to progress in construction phase, 2 grievances were received and addressed with ongoing surveys by the KFSU, PMU and the relevant stakeholders. In June, the social safeguard was just recruited.
- 8. Public Consultation, Information Disclosure, and Grievance Redress Mechanism.** In early May, 2 community consultations took place, conducted by the PUB and the three project under the PUB. Goal of this consultation was to expand the

target communities for our awareness. During this reporting period, the PMU received only one grievance submitted on the 19th of June 2025.

9. **Capacity Building and Training.** An OHS induction training took place in early June. This was a combined effort from the STWSP GDW3 (solar component) with the STREP. This training covered national labor standards, safety and hygiene, wages, and sexual harassment to all casual and skilled labors with their contractor. Another workshop was held at the Bikenibeu west on the 28th of February to the PUB Senior workers at the Bikenibeu Branch.

Project Overview

Project Background and Information

10. As of March 2018, 22% of the total electricity capacity installed in South Tarawa is ground and roof-mounted solar PV. The current power system in South Tarawa already has installed or planned grid-connected PV capacity to meet some of the peak demand, however, grid reliability will increasingly be put at risk as additional intermittent generation is added to the grid. Thus, to ensure system stability, battery storage needs to be deployed in the immediate future.
11. According to the Kiribati 20-Year Vision (2016-2036), electricity generation continues to increase at an annual rate of 1.7% to try to meet the public demand. The Government of Kiribati through the Ministry of Finance and Economic Development (MFED) has requested support from the Asian Development Bank (ADB) and other financiers to reduce dependence on fossil fuel imports by increasing the renewable energy percentage of electricity generation through South Tarawa Renewable Energy Project (STREP). This is to be implemented through three actions: a PV plus storage facility, a new energy act, and enabling framework, and a capacity-building program in renewable energy. The PUB will be the implementing agency for the solar PV plant and the Ministry of Infrastructure and Sustainable Energy (MISE) will implement the renewable energy enabling framework component. The PUB will establish a project management unit (PMU) and will be supported by a construction supervision

- 12.** STREP will allow the South Tarawa grid to achieve 44% renewable energy penetration, higher than the Kiribati Integrated Energy Roadmap (KIER) target for South Tarawa, which is 36% RE penetration by 2025.¹ Increased solar generation will benefit the economy through reduced importation of fossil fuels and placing downward pressure on tariffs. Utilization of renewable energy also reduces GHG emissions which contribute to global warming and rising sea levels that render Kiribati among the most vulnerable. The project is expected to generate 6.845 gigawatt-hours (GWh) of clean electricity from solar PV, offset 1.83 million liters of diesel fuel per year and avoid up to 4,928 tons of carbon dioxide equivalent GHG emissions per year by 2024.
- 13.** The impact of the project is an increase in renewable energy generation and a reduction in greenhouse gas emissions in Kiribati. The expected outcome is increased generation and utilization of clean energy in South Tarawa. STREP has three outputs: (1) Solar photovoltaic and battery storage system installed; (2) enabling framework for renewable energy adopted; and (3) institutional capacity in renewable energy project development, management, and supervision. Specific project deliverables are:
- I. The installation of 4.0 MW/5.0MWp ground-mounted solar photovoltaic (PV) capacity and 5.0MW/13 MWh of battery energy storage system (BESS) at the Bonriki Water Reserve.
 - II. Enabling framework for renewable energy developed, including assessments and revisions of (a) electricity legislation, (b) grid codes, (c) technical standards, and (d) model documentation for private sector engagement; and
 - III. institutional capacity building for stakeholders including project management and supervision, and operation and maintenance of renewable energy generation assets.

¹ Government of Kiribati. 2016. “*Kiribati Intended Nationally Determined Contribution*.” Tarawa.

Project Location

- 14.** The ground-based 5 MWp / 13 MWh Solar PV Plant will be located at the Bonriki Water Reserve, at the eastern end of South Tarawa, Tarawa Atoll, Kiribati. Tarawa is the capital of Kiribati and South Tarawa is the center of public sector and commercial activity. Tarawa Atoll is part of the Gilbert Islands group, the most western of the three main island groups in Kiribati.
- 15.** The Bonriki Water Reserve is government-leased land under the control of the PUB for the management of the Bonriki freshwater lens as one of the key sources of reticulated water supply for Tarawa. The project will require the installation of approximately 15,000 solar panels. Panels will be fixed to the ground at a set angle to maximize the exposure to the sun (they won't move through the day or the seasons). Battery energy storage system, stored in a series of purpose-built containers on site. All components, including inverters and transformers will be confirmed once the detailed design is finalized and approved.
- 16.** The Feasibility Study estimates that about 6 hectares of land is required for 5 MWp. The Feasibility Study also considered additional land requirements for solar PV to provide for future energy needs. According to the government investment plan, PUB intends to develop up to 10 MW of solar PV within the Bonriki Water Reserve which would require a total site of 13 hectares, as shown in Figure 1 below.

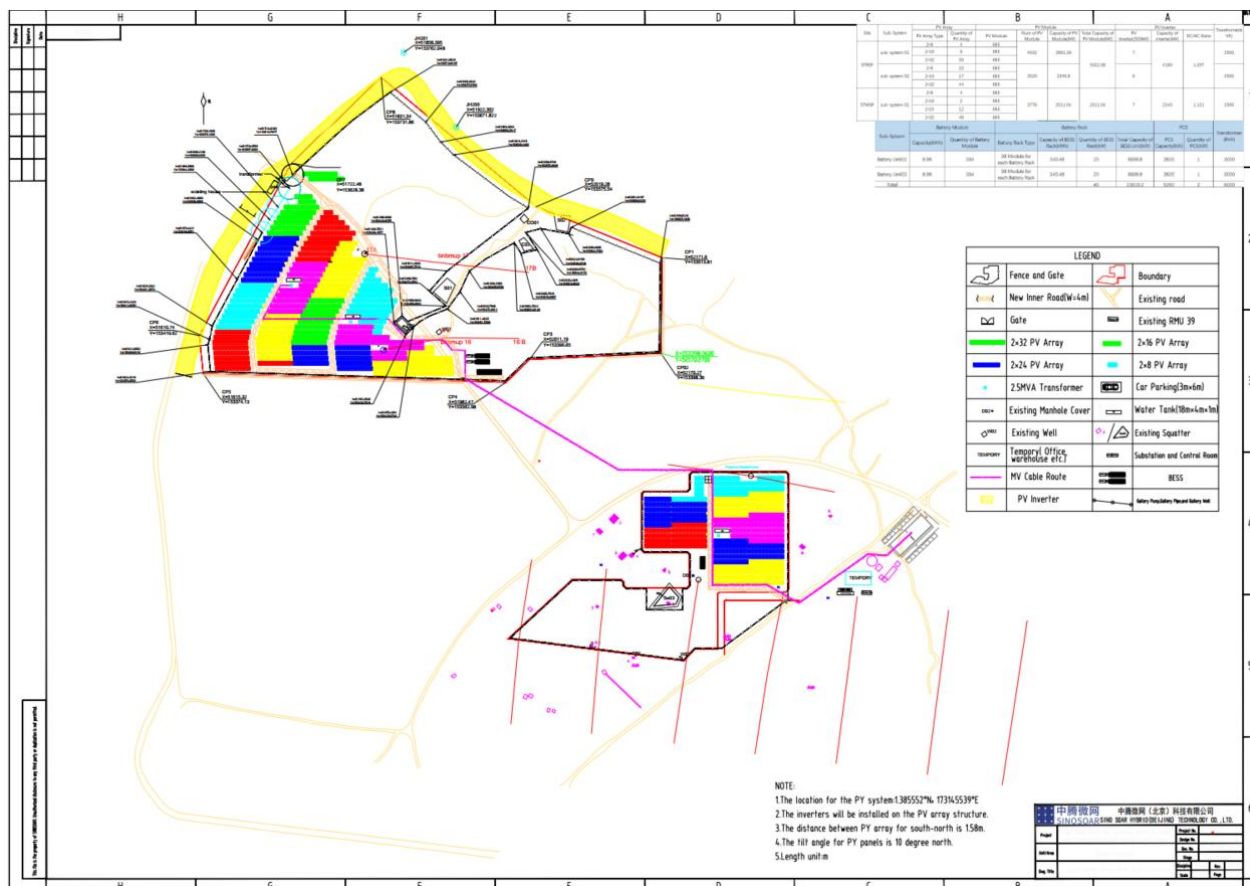


Figure 1: Updated delineation of 13 ha area (black boundary) for current and future Solar PV Developments

Note: The STREP site is located on the northern part of the project layout. This is the updated site map of the project site.

Project Safeguards Categorization and Approval

17. The objectives of ADB's safeguards are to: **(i)** avoid adverse impacts of projects on the environment and affected people, where possible; **(ii)** minimize, mitigate, and/or compensate for adverse project impacts on the environment and affected people when avoidance is not possible; and **(iii)** help borrowers/clients to strengthen their safeguard systems and develop the capacity to manage environmental and social risks. Through its Safeguard Policy Statement 2009 (SPS) ADB establishes policy objectives, scope and triggers, and principles for three key safeguard areas of the

environment, involuntary resettlement, and Indigenous People. The SPS sets out the process to be applied from screening, through due diligence and assessment to monitoring and reporting. Under this policy statement, this project is categorized as B for involuntary resettlement, Category C for Indigenous Peoples, and Category B for the environment.

18. Category B for involuntary resettlement under SPS 2009 indicates that the project will not result in compulsory acquisition of land, there will be no physical displacement impacts, nor impacts on livelihoods. There will be impacts on one communal water well, and over 600 trees. The trees are used by nearby households as a communal resource for natural resource products (such as firewood and fruit) which are consumed within the home. A Resettlement Plan (RP) and Consultations with affected persons and nearby communities are therefore required. The RP was prepared in compliance with the SPS and laws of Kiribati and was disclosed to affected persons by the Ministry of Environment Lands and Agriculture Development (MELAD). The resettlement plan and an updated version are disclosed on the ADB website. Category C for indigenous peoples according to SPS 2009 indicates that no distinct and vulnerable indigenous peoples will be affected and all the activities under the project will be implemented in a culturally appropriate and participatory manner.

19. Category B for environment; impacts are site-specific, few if any are irreversible, and mitigation and management measures can be readily designed and implemented for most impacts. The ADB will ensure the SPS as well as country safeguards are complied with. Following the SPS, an initial environmental examination (IEE) has been prepared for the project and was approved by MELAD in October 2021.

Safeguards Implementation Arrangements

20. The Executing Agency (EA), which is MFED, will ensure compliance with Environmental and Social Safeguards to the grant agreement.

21. The Implementing Agency (IA) which is PUB with assistance from PMU and PIC, will prepare the safeguard documents, and supervise and evaluate the implementation of the CEMP, RP, CCP, and other documents by the contractor.
22. PMU and PIC have key responsibilities to incorporate all safeguard documents into the bidding documents.
23. MELAD will be responsible for reviewing and approving the IEE/EMP, CEMP, and RP, implementation of the ETPP and monitoring of compliance with the Environment License conditions and CEMP. MELAD LMD is responsible for the disbursement of compensations to landowners
24. The summary of implementation arrangements is shown in Table 1 below.

Table 1: **Project Safeguards Implementation Arrangements**

Project implementation organizations	Environmental Management Roles and Responsibilities
Executing agency – Ministry for Finance and Economic Development (MFED)	<ul style="list-style-type: none"> • Ensure overall compliance with the project safeguard-related grant agreement and covenants. • Ensure the compilation and presentation of SMR and other safeguards reports under the project are met.
Implementing Agency – Public Utilities Board (PUB) and Project Management Unit	<ul style="list-style-type: none"> • Submission of environmental documentation to ECD-MELAD as required under the Environment Act and Regulations. • Responsible for the overall implementation of the project
Project Steering Committee (PSC)	<ul style="list-style-type: none"> • Responsible for providing Government oversight of projects and reporting to the Office of the Beretitenti.
Kiribati Fiduciary Services Unit (KFSU)	<ul style="list-style-type: none"> • Participate in project safeguard monitoring activities

Project implementation organizations	Environmental Management Roles and Responsibilities
	<ul style="list-style-type: none"> • Review bidding documents and ensure safeguards documents are incorporated and request for proposal • Review safeguards documents and monitoring reports • Assist to stopgap PMU in the absence of its safeguards
Project Management Unit (PMU) and their specialist consultants (including environmental and social consultants within the CSC)	<ul style="list-style-type: none"> • Responsible for oversight of the project implementation, under the direction of PUB, to ensure compliance of contractors with contracts, specifications, and management plans. • Update the IEE, including its EMP as required and assist the PUB prepare and submit the applications to ECD-MELAD and incorporate the documents into the bidding documents. • Preparing quarterly progress reports and semi-annual monitoring reports and disclosing them as per ADB policies. • Provide support in preparation for the CEMP
MELAD	<ul style="list-style-type: none"> • Review IEE, EMP, and RP and process application as required • Monitor and enforce EL conditions, review and clear the CEMP • Implement and monitor the ETPP • Conduct land surveys and confirm Inventory of Losses (IOL) and are responsible for disbursement of compensations.

Project implementation organizations	Environmental Management Roles and Responsibilities
Contractor	<ul style="list-style-type: none"> • Preparation of the project CEMP and other plans as required before the commencement of any on-site work and submit to MELAD and PMU for approval. Prepare necessary revisions of the plans if required. • Implement CEMP and relevant aspects of GRM, RP, and CCP and provide reports and corrective action plans as required. • Identify materials and equipment sources and arrange necessary permits, consents, and compliance certificates. • Provide inductions as required to all staff, contractors, and visitors to the site and ongoing training and awareness raising of EMP requirements to staff, contractors, and visitors to the site
ADB	<ul style="list-style-type: none"> • Review all feasibility study documentation (incl. IEE RP CCP etc.) • Undertake regular review missions. • Review monitoring reports and disclose project information as required

Safeguards Legal Requirements

- 25.** The implementation of the project is governed by the applicable laws and regulations of Kiribati known as country safeguards system (CSS) and the Safeguard Policy Statement 2009 (SPS) of the ADB. As stated in the project IEE, all relevant environmental regulations of Kiribati that includes Environment Act (No. 9 of 1999), 2007 amendments and the Environment (general) Regulations of 2009 which are the cornerstones of the CSS and other legislations are applicable to the project.
- 26.** As of June 2024, no issues have been observed around conformance to national regulations and ADB policies.
- 27.** All environmental and social safeguards related covenants are either being complied with or are not yet due.

Project Safeguards Progress.

- 28.** This is the eighth Semiannual Safeguards Monitoring Report of STREP reporting its Environmental and Social Safeguards for the first half of 2025 (January to June 2025). During this period, the construction phase has advanced - installation of the Solar PV and BESS. Towards the end of the reporting period, groundwork shifted to the STWSP solar PV site, hence, work on the STREP site is minimal observed in 2nd Quarter Safeguard Audit in June 2025.
- 29.** The PMU safeguards framework includes the PMU's internal safeguards team, international Environmental and Social Safeguard Specialists, and the KFSU safeguards team. Safeguards' progress and findings throughout this reporting period are further elaborated in the table below:

Table 2: Safeguards: Identified risks, corrective Actions and Status.

<i>Safeguards risks identified</i>	<i>Risks</i>	<i>Corrective Actions</i>	<i>Status</i>
1. Lack of information provided on the source of water used in dust suppression and concrete mixing	The source of water used for this activity is important for PUB to identify for the Contractor, to avoid overconsumption of water and complaints on water extraction without consent.	<ul style="list-style-type: none"> Contractor to provide information on the water source for spraying ground to avoid dust, concrete mixing, etc. As per CEM, PUB to identify water sources for such activities 	<ul style="list-style-type: none"> Contractor used well water during raining periods for concrete mixing. During normal days with minimal rain, the contractor use water from the nearby ponds.
2. Proper recording of all environmental incidents.	All environmental must be reported to the ECD as per the EL conditions	Contractor has been reminded of EL conditions and is now obliged to report to ECD and PMU. Contractor is to share all the Incidents reports to PMU and ECD.	All incidents' reports have been shared with PMU. Contractor is now practising 24 hrs procedure to report all incidents.

3. Traffic management (Signs)	Visitors and public entering the site, are not aware of speed limit and all safety procedures (signs at the gates not clear)	Contract to erect signages (speed limit and safety information).	The signages are all installed and erected at the two gates.
4. Untidy sites	Poor housekeeping increases the risks of accidents on sites.	The contractor must ensure consistent site cleanliness before, during and after work shifts to maintain safety hazards.	This has been addressed within the timeframe given by the PMU, ECD and the KFSU. However, few litters have been observed on site.
5. Waste Management (Labelled Rubbish Bins)	Contributing to littering, there are no labelled rubbish bins (recycle, plastics, and general waste)	Contractor to have rubbish bins labelled accordingly to the EMP.	The contractor has labelled the three rubbish bins accordingly.
9. Importation Permits and quarantine processes	Given the heavy used of imported materials in the project, even gravels, there is a high risk of alien species if not comply with quarantine processes.	Contractor to provide all importation and quarantine permits to ECD, and PMU	The Contractor has provided all the importations' permits to ECD and PMU.
10. GRM box	GRM box location is not easily accessed by the public and workers.	Contractor to relocate the GRM box to the site entrance to ensure visibility and accessibility to the community.	Pending.
11. PPE	The minimal work at the STREP site has allowed the workers to slack on their PPE compliance.	Contractor to ensure that all workers are fully equipped with full PPE.	The contractor has reinstated the importance of PPE to workers and are now in compliance.

12: Project signages	Fading signage as the project entrance.	Contractor to renew signages at the entrance and insert their contractors GRM and liaison officer credentials for public awareness.	To be reported in the next reporting period.
-----------------------------	---	---	--

Environmental Safeguards.

- 30.**As the project advanced into the construction phase, the Project Management Unit (PMU) increased the frequency of site visits and monitoring efforts. During the reporting period, two Environmental and Social Audits were conducted, one in April and another in June. Most audits and inspections were carried out alongside technical checks performed by the Project Implementation Consultant (PIC) site engineers, as most panels and wiring had already been installed. This collaboration ensured that both safeguard and technical issues were effectively addressed.
- 31.**The Environmental and Social audit for Quarter 1 was held in April. This is due to the staff movement during the proposed audit date, it was held a week later than intended. The faults identified during this audit were minimal such as dust concerns and PPE. These have been shared with the contractor for their corrective actions.
- 32.**In addition, during the Quarter 2 audit, the most critical environmental issue observed was that the Contractor has been excavating the site for the transformer foundation to a certain depth that is not EL-compliant. These observations were further inspected and communicated to the contractor for their corrective actions. The contractor has provided justification that by doing so, the risk of mechanical damage will decrease. The justification report provided can be found in Annex1b
- 33.**Another issue observed is the littering/untidiness of the site with poor waste management shown by no labelled rubbish bins as per the EL. Further information regarding this issue is elaborated in table 3 below.

34. From June onwards, audits and inspections were conducted promptly as the PMU Environmental and Social Safeguard officers were just recruited.

35. A summary of the environmental safeguards activities throughout this reporting period is provided in the table below. Note that the Environmental Safeguard Officer was just recruited in June, towards the end of the reporting period, hence, few activities can be recalled, populating activities in Jan – May from incident reports and other relevant documents.

Table 3: Environmental Safeguard Activities for July – December 2024.

January	<ul style="list-style-type: none">• Ongoing site visits• Follow up actions on audit outcome• Compiling information to inform the 7th SMR preparation for January – June 2025.• Support for STREP 2 Safeguard due diligence ongoing.
February	<ul style="list-style-type: none">• Ongoing site visits.• Deal with Incident - leaking of PUB pipe due to the Contractor's excavation with crowbar activity.•
March	<ul style="list-style-type: none">• Contractor was ordered to work with proper gear while moving cements out from the container.• STREP hybrid Mission (MTR)• Country Portfolio Review Mission
April	<ul style="list-style-type: none">• Deal with Incident – leaking PUB water pipe by the Contractor's excavator.• Contractor to deal with local labors asked for compensation for working with the dust and oil• Ongoing site visits

	<ul style="list-style-type: none"> • Environment and Social safeguard Audit.
May	<ul style="list-style-type: none"> • Follow up outcome of Environment and social audit. • Ongoing site visits
June	<ul style="list-style-type: none"> • Review Incident Reports. • Review and update IEE (STREP2) according to ECD's comments. • Conduct a combined Quarterly Audit with ECD, and KFSU. • Meetings with Contractor – follow-up on Audit's outcomes and EL-compliance plans. • Consult relevant reports to inform the development of the 8th SMR for Jan-Jun 2025.

Social safeguards:

- 36.** Monitoring of the Resettlement plan has been prioritized and thus ongoing for this reporting period. As the project advances into construction phase, the PMU, with support from the PIC engineers and the KFSU Safeguard team, has continued the RP monitoring to assess progress and compliance with the RP commitments. Ongoing bilateral have been held with the Lands Department to address grievances and coordinate surveys.
- 37.** The team conducted safeguards audit to further ensure full compliance of the contractors with safety and environmental standards. A meeting was also held with ADB safeguards to address ongoing portfolio issues related to late recruitment of safeguards in the PMU. Participation in the Outreach taskforce meeting allowed improved coordination with stakeholders and strengthened engagement processes.
- 38.** Key reporting milestones during January to June, included the preparation of Safeguards Monitoring report (SMR) for July – December 2024. A joint in-country mission was undertaken by both the World bank and ADB project officers to address emerging project and safeguard issues. Additionally, the STREP Mid-Term Review hybrid mission was conducted, involving both in-person and remote consultations to

evaluate project performance.

- 39.** Consultations were carried out in May this year as part of a combined effort between PUB and their other ongoing project. The KFSU team, assisting STREP, delivered STREP- related content to the public via presentations (Annex
- 40.** In June, the Social and Environment Safeguard officer was recruited to further strengthen the safeguards team. Following their commencement, multiple meeting were held with the lands department to discuss status of the warrant, compensation matters and other pending tasks related to updating the resettlement plan.
- 41.** Coordination was undertaken with PUB to address long-outstanding claims. A new grievance was received and addressed, including a resolution process with PUB and follow-up inspections. An Environment and Social Safeguard Audit was conducted, with findings discussed at the STREP PMU meeting. Additional activities during the period included logistics coordination for onsite tree cutting with contractors, participation in stakeholder consultation taskforce meetings, and a Bwabwai pit survey with LMD surveyors.
- 42.** This reporting period has equipped the social safeguards with a good network that will ensure timely reporting, stakeholder engagement and grievance resolution for future reports.

Table 4: Summary of Social Safeguards Activities January - June 2024

Jan	<ul style="list-style-type: none">• RP monitoring• Meeting with the LMD team for Grievances and Surveys.• QTR 4 report• PMU meetings
February	<ul style="list-style-type: none">• Safeguard safety walk and Monthly inspection.• Meeting with ADB Safeguards for Safeguard portfolio issues.• Outreach taskforce meeting.• STREP ESMR for July – December 2024.• STREP Annual report
March	<ul style="list-style-type: none">• SMR – July to December 2024.• Country Portfolio Review Mission

	<ul style="list-style-type: none"> • STREP MTR Hybrid mission.
April	<ul style="list-style-type: none"> • ADB regional GRM Training. • STREP SMR June to December disclosed. • Environment and Social safeguard Audit.
May	<ul style="list-style-type: none"> • Consultation preparatory meeting • Community Consultations to Abarao village. • Tree survey with the LMD team.
June	<ul style="list-style-type: none"> • Social safeguard recruited. • Meeting with the lands team on the Rewarrant brief for STREP • updating resettlement plan • STREP staff meeting • onsite tree cutting logistics with contractor • meeting with ADB safeguards for pending compensation rate review. • meeting with lands compensation review update • meeting with lands for rewarrant brief and compensation update for STREP1 • social safeguards workplan, resettlement plan review for pending compensation • bwabwai pit compensation with the PUB - long outstanding payment • GRM#011 received • Resolving grievance with PUB. • Environment and Social Safeguard Audit. • Follow up inspection. • Meeting with LMD surveyors for GRM#011 • stakeholder consultation taskforce meeting. • bwabwai pit survey with the LMDsurveyors. • STREP PMU meeting, social safeguards Audit outcome.

Consultations and Information Disclosure.

43. Two Community consultations were conducted in Abarao Village (annex 4). These consultations were a collaborative outreach effort involving the PUB and its projects.

The STREP Social safeguard officer was in attendance of this consultation to promote STREP1 and STREP 2 to further expand its audience.

- 44.** Although the consultations were held in Abarao Village over two days, attendance was not limited to residents of the host village. A total of 55 participants attended, comprising of 12 males and 43 females, with some individuals coming from neighboring villages to participate.
- 45.** The consultations provided overview of the various projects PUB projects, their current status and key updates. PUB delivered a detailed presentation on energy efficiency measures. STREP team also presented its project objectives, status and implementation approach. This included an overview of the project's development partners, expected impacts and benefits. The team also covered safeguards, including the Grievance Redress Mechanism (GRM) to ensure transparency and community awareness of available processes. Informational pamphlets were also distributed during the sessions, with a total of 55 pamphlets shared across the 2 venues
- 46.** In addition to the consultations, the Semi-Annual Monitoring Report (SMR) for June to December 2024, the Quarter 4 Report, Report were successfully disclosed during this period.

Grievance Redress Mechanism

- 47.** GRM#011 was received on the 19th of June 2025 and represents the most recent complaint submitted under the projects GRM. The grievance was lodged by the landowners who had temporarily resided in another village and were unaware of the ongoing construction at the project site. Their return to Bonriki (Project Site), they inquired with the lands department regarding their compensation. Despite following the standard compensation protocols, they had not received their payments and subsequently lodged their concern as a formal grievance seeking project intervention. (Annex 5)

48. The PUB has facilitated their outstanding compensation, and the issue has been resolved.

Compliance to Safeguard-Related Covenants

Table 5: Status in compliance of Safeguards related covenants.

Schedule	Para	Covenant	Remarks
3	2	<p>Environment</p> <p>The Recipient shall ensure, or cause the Implementing Agency to ensure, that the preparation, design, construction, implementation, operation and decommissioning of the Project and all Project facilities comply with (a) all applicable laws and regulations of the Recipient relating to environment, health and safety; (b) the Environmental Safeguards; and (c) all measures and requirements set forth in the IEE, the EMP, and any corrective or preventative actions set forth in a Safeguards Monitoring Report.</p>	<p>Complied</p> <p>The CEMP complies with IEE, and EMP. Monthly safeguard inspections and audits are ongoing to ensure compliance with recipient environmental laws and regulations.</p>
3	3	Land Acquisition and IR	<p>Complied</p> <p>RP has been prepared and disclosed to the public.</p> <p>Compensation Completion Report</p>
		<p>The Recipient shall ensure, or cause the Implementing Agency to ensure, that all land and all rights-of-way required for the Project are made available to the Works contractor in accordance with the schedule agreed under the related Works contract and all land acquisition</p>	

Schedule	Para	Covenant	Remarks
		and resettlement activities are implemented in compliance with (a) all applicable laws and regulations of the Recipient relating to land acquisition and involuntary resettlement; (b) the Involuntary Resettlement Safeguards; and (c) all measures and requirements set forth in the RP, and any corrective or preventative actions set forth in the Safeguards Monitoring Report	(CCR) has been endorsed allowing the contractor to access the site.
3	4	<p>Without limiting the application of the Involuntary Resettlement Safeguards or the RP, the Recipient shall ensure, or cause the Implementing Agency to ensure, that no physical or economic displacement takes place in connection with the Project until:</p> <p>(a) compensation and other entitlements have been provided to affected people in accordance with the RP; and</p> <p>(b) a comprehensive income and livelihood restoration program has been established in accordance with the RP</p>	<p>Complied</p> <p>Considered in the RP.</p> <p>The project is using the tree compensation current rates (2021)</p>
3	5	<p>Indigenous Peoples</p> <p>The Recipient shall ensure, or cause the Implementing Agency to ensure, that the Project does not have any indigenous peoples impacts, within the meaning of the Safeguard Policy Statement. In the event that the Project</p>	<p>Not Applicable</p> <p>Not triggered in this Project</p>

Schedule	Para	Covenant	Remarks
		does have any such impact, the Recipient shall take all steps required to ensure that the Project complies with the applicable laws and regulations of the Recipient and with the SPS.	
3	6	Human and Financial Resources to Implement Safeguards Requirements The Recipient shall make available necessary budgetary and human resources to fully implement the EMP and the RP	Complied. The project has recruited both Environmental and Social Safeguards in June 2025.
3	7	Safeguards – Related Provisions in Bidding Documents and Works Contracts The Recipient shall ensure, or cause the Implementing Agency to ensure that all bidding documents and contracts for Works contain provisions that require contractors to (a) comply with the measures relevant to the contractor outlined in the IEE, the EMP and the RP (to the extent they concern impacts on affected people during construction) and any corrective or preventative actions set forth in a Safeguards Monitoring Report (b) make available budgets for all such environmental and social measures. (c) provide the Recipient with a written notice of any unanticipated environmental, resettlement or indigenous peoples risks or impacts that	Complied CEMP v10 has been approved and granted an EL. The CEMP monitoring is ongoing by the KFSU in the absence of the PMU's safeguards.

Schedule	Para	Covenant	Remarks
		arise during construction, implementation or operation of the Project that were not considered in the IEE, the EMP and the RP;	
		<p>(d) adequately record the condition of roads, agricultural land and other infrastructure prior to starting to transport materials and construction; and</p> <p>(e) reinstate pathways, other local infrastructure, and agricultural land to at least their pre-project condition upon the completion of construction</p>	
3	8	<p>Safeguards Monitoring and Reporting</p> <p>The Recipient shall do the following, or cause the Implementing Agency to do the following</p> <p>(a) submit semi-annual Safeguards Monitoring Reports to ADB and disclose relevant information from such reports to affected persons promptly upon submission</p> <p>(b) if any unanticipated environmental and/or social risks and impacts arise during construction, implementation or operation of the Project that were not considered in the IEE, the</p>	<p>Complied</p> <p>The first to the seventh SMRs covering January 2021 to December 2024 have been shared, endorsed and disclosed on the ADB website.</p> <p>This eighth SMR is a testament to the</p>

Schedule	Para	Covenant	Remarks
		<p>EMP and the RP, promptly inform ADB of the occurrence of such risks or impacts, with detailed description of the event and proposed corrective action plan; and</p> <p>(c) report any actual or potential breach of compliance with the measures and requirements set forth in the EMP or the RP promptly after becoming aware of the breach.</p>	<p>ongoing conformance of Safeguards Monitoring and Reporting.</p>
3	10	<p>Labor Standards, Health and Safety</p> <p>Recipient shall ensure, or cause the Implementing Agency to ensure, that the core labor standards and the Recipient's applicable laws and regulations are complied with during Project implementation. The Recipient shall include specific provisions in the bidding documents and contracts financed by ADB under the Project requiring that the contractors, among other things: (a) comply with the Recipient's applicable labor law and regulations and incorporate applicable workplace occupational safety norms; (b) do not use child labor; (c) do not discriminate workers in respect of employment and occupation; (d) do not use forced labor; (e) allow freedom of association and effectively recognize the right to collective bargaining; and (f) disseminate, or engage appropriate service providers to disseminate, information on the risks of sexually transmitted</p>	<p>Complied</p>

Schedule	Para	Covenant	Remarks
		diseases, including HIV/AIDS, to the employees of contractors engaged under the Project and to members of the local communities surrounding the Project area, particularly women.	
3	11	The Recipient shall strictly monitor compliance with the requirements set forth in paragraph 10 above and provide ADB with regular reports.	Complied
3	15	<p>Conditions to Award of Contract</p> <p>The Recipient shall ensure, or cause the Implementing Agency to ensure, that no Works contract which involves environmental impacts is awarded until:</p> <p>(a) MELAD has granted the final approval of the IEE; and</p> <p>(b) the Implementing Agency has incorporated the relevant provisions from the EMP into the Works contract.</p>	<p>Complied</p> <p>EL with Conditions has been issued by MELAD ECD and incorporated in the bidding documents</p>
3	16	The Recipient shall ensure, or cause the Implementing Agency to ensure, that no Works contract which involves involuntary resettlement impacts is awarded until the Recipient has prepared and submitted to ADB the final RP based on the Project's detailed design and obtained ADB's clearance of such RP.	<p>Complied</p> <p>ADB has issued no objection to the RP. RP has been disclosed to the public. The Revised RP to incorporate new losses.</p>

Conclusions and Future Activities

- 49.** During the reporting period from January to June 2025, STREP has made significant progress in implementing and monitoring environmental and social safeguards. Although the Project Management Unit (PMU) has been operating without Environmental and Social safeguard officers, compliance with safeguard matters has been consistently maintained, thanks to the support from the KFSU safeguard team and PIC safeguard personnel. The PMU safeguard officers were only recruited in June 2025, towards the end of this reporting period. Additionally, progress at the STREP site has been minimal, as most workers have been focused on developments at the STWSP site.
- 50.** Safeguard inspections and audits were conducted in April and June 2025. The common environmental issues identified included non-compliance with PPE regulations, dust management, untidiness, and leaking PUB pipes during excavation activities. All these issues have been addressed by the contractor and documented as resolved in the inspection reports.
- 51.** The recruitment of the safeguards has strengthened safeguards progress throughout this period. Continuous monitoring of the Resettlement plan has ensured alignment with project commitments. While safeguards audits and site inspections maintained adherence to safety and environmental standards, the proactive engagement of the PMU through consultations, taskforce meeting and coordination with key stakeholders shows that the recruitment of the safeguards team has further enhanced the team's capacity to manage safeguards obligations effectively.
- 52.** Overall, this reporting period has reflected a good balanced approach of teamwork, and timely reporting of audit findings and constructive stakeholder collaboration which has contributed positively to the project's implementation.

To maintain compliance with the ADB and national safeguard requirements, the project has committed to undertake the following actions.

- Continue regular monitoring – Pace out the fortnightly inspections to monthly inspections as the work on the ground (STREP site) is minimal due to development at STWSP site.

- Continue working with MELAD, ECD to ensure compliance with the conditions of the Environmental License, and to ensure update and the EL where necessary.
- Strengthening early engagement with stakeholders—particularly the Lands Department and PUB—can help prevent delays in resolving compensation matters and expedite decision-making processes
- Clear integration of clear grievance resolution timelines and follow-up mechanisms will enhance transparency and trust within affected communities.
- Maintain momentum of Capacity building for both the safeguards team and contractors, particularly in safety and environmental compliance.
- Improving documentation and dissemination of safeguards information, including public disclosure of monitoring reports and consultation outcomes

ANNEX:

Annex 1a: Environmental and Social Performance Monitoring –Pre-construction to construction phase –January – June 2025

SPS Requirement	Actions	Required-Actions and Mitigation Measures	Pre - check YES ✓ NO X	On-site YES ✓ NO X	Comment
Env. Safeguard SOW as per project CEMPIEE	Road upgrade design - Contractor on instruction from PUB. (supposedly this is pre-construction/installation work)	Include road safety features in design	Yes	✓	PMU: Please comment if you have already or yet to start on this.
		Include stakeholder engagement in design process and address community needs where possible.	Yes	✓	PMU: Please provide record on this stakeholder engagement if any conducted within Jan-June 2025.
		Ensure compaction/sealing is minimized, and storm water is directed to ground	Yes	✓	PMU: Please provide detail if you have already or yet to start on this, especially on the storm water matter.
		Include extension of road to the airport in design	No		Contractor: This is not requested in the IEE/CEMP
	Erosion and Sedimentation Control - Contractor (supposedly this is pre-construction/installation work)	Identify other connectivity mitigation measures in design	Yes	✓	
		Erosion control works and measures will be installed to control surface water runoff and prevent the export of sediments from the site by ensuring storm water flows to ground in stable, preferably vegetated, areas.	Yes	✓	PMU: Please provide plans or recorded work on this. If not yet conducted or acted upon, please show the planned date.
		If erosion control measures are needed, we will closely follow land contours to reduce runoff velocity from exposed soils.	Yes	✓	PMU: Provide plans to do it, if already conducted please provide records.
		Storm water design will be strictly followed to control surface water runoff and prevent the export of sediments from the site	Yes	✓	PMU: Please provide plans or recorded work on this.
		Existing drainage lines will be protected and diversion of drainage line avoided.	Yes	✓	Contractor: No existing drainage on site before the work starts
		Sediment traps (e.g. silt fences) will be constructed across all drainage lines and erosion controls from site that are likely to receive runoff from exposed or disturbed soils.	Yes	✓	PMU: Please provide plans or recorded work on this.
		A shade tolerant low groundcover (e.g. grass) will be established	Yes	✓	
	The use of water for potable supply, dust suppression, concrete mixing and other purposes, and the discharge of contaminated storm water and wastewater. - PUB and Contractor	PUB to determine the appropriate source of water (reticulated or rainwater harvesting).	Yes	☒	PMU: Contractor rep do not have the information, especially on water source used in concrete mixing. Action: Contractor to provide information on water source for mixing concrete.
		In the construction area, drainage ditches and drains will be reasonably arranged, and roads and sites will be properly sloped, so that the sewage and wastewater will not flow out and there will be no standing water in the site.	Yes	☒	PMU: This is not the case in the construction site. Water still trapped in the construction site (refer to photo 1 attached). Understandably, this can be complied with before end of construction and excavation stage. Action: the contractor required to provide a plan to do this.
		The rainwater collection equipment will be installed to collect the water for site use.	Not yet	✓	Contractor: This will be constructed with the substation (not started yet) Action: Provide plan design and tentative date to start and complete this.
		It is forbidden to use toxic and hazardous wastes as earth backfill to avoid polluting groundwater and the environment.	Yes	✓	
	Demand for construction aggregates - Contractor	All aggregates to be sourced from the licensed dredging facility in South Tarawa, recycled from other projects or imported from offshore.	Yes	✓	PMU: All aggregates sourced from Atinimarawa and also imported from china. Action: Contractor to provide approved importation document for the aggregates and other imported materials – for safeguard record and reporting purposes.

		No use of existing or new borrow pits on the water reserve.	Yes	☒	PMU: Existing and approved borrow pit is almost full (refer to photo 2 below) and the Contractor rep do not know how to deal with it if full. Action: Contractor to provide plan on how to avoid spill and overflow of the waste-water filling the pit.
Cultural Heritage Protection - Contractor		Fence the cemetery to avoid damage from earthworks activities.	Yes	☒	PMU: Cemetery is not fence Action: Contractor to deal with grievance/complainant(s) and erect fence around the cemetery.
		Allow full and safe access to the cemetery by the public. If there is a safety risk to the public, provide forewarning and provide alternative access.	Yes	✓	PMU: same as above
		If an artefact is discovered during site clearance that is suspected of being of cultural heritage significance work will cease immediately and the ECD contacted to determine significance of the find. The PUB will also be notified immediately.	Yes	✓	
Water quality monitoring		The Contractor will avoid discharges to ground of any substance or waste.	Yes/No	✓	Contractor: No within water reserve. A dump pit is allowed to use outside the reserve and the MELAD approved that.
		The Contractor will avoid ground disturbances as much as possible.	Yes	✓	
		refer to Sheet 5. Waste management plan and Sheet 6. Spill Response Plan in this document.	Yes	☒	PMU: There is no labelling of waste storage/ rubbish bins. A lot of littering inside. Action: Contractor to provide labelled rubbish bins (general waste, recycle waste, ...). Clean and tidy up the construction site at any time.
		Maintenance to avoid leaks, breaks or other damage to panels.	Yes	✓	PMU: Please provide plan to do this.
		Fast removal and replacement of broken or damaged panels.	Yes	☐	PMU: Please provide plan to do this.
		Housekeeping and waste management.	Yes	☒	PMU: No signage erect on housekeeping and waste management. Littering observed. Action: Signs on this, must be erected, otherwise, housekeeping and waste management need to be included in every Monday briefing.
Unanticipated Environmental impacts - Contractor		If unanticipated environmental impacts occur during construction phase, in consultation and agreement with the PUB, the Contractor will act to avoid or minimise the risks and respond to incidents immediately and update the CEMP as required.	Yes	☒	PMU: In previous incidences, PUB, ECD and other relevant stakeholders are not informed of the incidences within 24 hrs. Action: Contractor to provide all incidences reports and complied with the 24 hrs to inform stakeholders of incidences.
Environmental compliance checklists & reports (EL Conditions)	Noise and Vibration - Contractor	Working hours will be between 7am and 5pm Monday to Friday, and Saturdays if agreed between the Contractor, PUB, town council and the nearby community. Where safety or technical reasons require work to be completed outside of these hours, noise levels will be kept to a minimum and town council with nearby residents will be informed.	Yes	☐	PMU: As per email from Tavita, there is an intersection and reminder for the Contractor to comply to working hours stated in the EL. Action: Contractor to comply to working hours stated in EL.
		Significant noise generating activities will be carried out in the least sensitive time periods to be determined in consultation with the town council and neighbours.	Yes	✓	PMU: No significant noise generated during the on-site auditing.

Air quality and dust - Contractor	Equipment and plant will be maintained in good order. Noise reduction components (e.g. mufflers) will be inspected prior to the commencement of works to ensure they are fully functional.	Yes	✓	PMU: Machineries are working properly. Action: Contractor to do regular maintenance.
	Noise emissions from construction equipment will not exceed 75 dBA.	Yes	✓	
	Vehicles and machinery will be maintained in good order.	Yes	✓	PMU: Machineries are working properly Action: Contractor to do regular maintenance.
	Vehicles will not be left idling when not in use.	Yes	✓	
	Vehicles carrying soil, sand, crushed aggregate or other fine materials to or from site will be covered.	Yes	☒	PMU: Materials are carried in bags. Excess and spill materials (aggregates are observed in the storage area). Action: Contractor to use first spilled aggregates, properly covered when transported. Otherwise refill empty bags with spilled aggregates and tidy up the storage area.
	Site and access roads, including those from the wharf and material stockpile areas, will be wetted or stabilised by other means if weather conditions dictate dust may be generated to the extent that neighbouring properties or road users will be impacted (dry and windy periods). Water use will be strictly controlled. Low levels of dust will be tolerated.	Yes	✓	
	Location of stockpiles and laydown areas to be submitted to and approved by PUB and MELAD	Yes	✓	PMU: The construction site is having space for stockpiling and laydown area.
	Materials stockpiles will be covered with tarpaulins or similar to avoid dust generation.	Yes	☒	PMU: The stockpiles are not covered to avoid dust generation. Action: Contractor to cover stockpiles, especially sand to avoid dust generation.
	A speed limit of 5km/hr will apply to all Contractor's vehicles on unsealed roads within residential areas		☒	PMU: Vehicles running in the site are beyond 5km/hr. Also there is no speed limit sign erected in gates. Action: Contractor to erect speed limit signs and include it in Monday morning briefings.
			☒	
Waste Management Planning and Monitoring - Contractor	Proper and labeled suitable waste containers that allows for correct segregation of waste shall be made available at construction, storage, stockpile and laydown sites.	Yes	☒	PMU: There is no labelling of waste storage/ rubbish bins. A lot of littering inside. Action: Contractor to label rubbish bins (general waste, recycle waste.). Clean and tidy up the construction site all the time
	General wastes must be always contained within designated waste bins at the construction, storage and stockpile site and regularly disposed in the nearest approved landfill.	Yes	☒	PMU: Not the case on site. Action: Labelling of rubbish bins and waste storages is needed (refer to photo 3 below).
	Waste will be avoided and reduced, such as vegetation waste and fill. All solid and inorganic waste will be shipped offshore for recycling and / or disposal.	Yes	☒	PMU: Same as above.
	Excess spoil will be stockpiled for reuse.	Yes	✓	PMU: Excess spoils are stockpiled.
	Hazardous waste (if generated) will be shipped offshore to an appropriately licensed facility.	Yes	✓	

	Construction work is carried out in accordance with the approved project site, design layout and specifications applied for the EL application. Any changes in the design shall be approved by MELAD - ECD prior implementation - Contractor/ESO	Work with Contractor if the change in design to accommodate grievances have been approved by ECD	Yes	✓	
	All construction activities are undertaken from 7 am to 5pm Monday - Saturday ONLY - Contractor	Do a Sunday visit to see that there is no work conducted	Yes	✓	PMU: Upcoming PMU activity.
	All employees and visitors always wear PPE at construction site and storage yards - Contractor and PMU	Join a Weekly - briefing	Yes	✓	Every Monday morning
		Conduct a sudden on-site checking for PPE	Yes	✓	PMU: Sudden on-site checking for PPE has been frequently conducted by Contractor (Rotina)
	Dust screen shall be installed around the construction site including storage sites and laydown areas. Contractor	Check all the concerned sites have the dust screen installed.	Yes	✓	
		Should there be excessive dust emitted within the sites the EL Holder and Contractor must dampen the ground to avoid causing discomfort	Yes	✓	PMU: vegetations (grass) is playing the part in minimizing dust generation.
	Coverage of Stockpile and transportation of sand and aggregate Contractor	Transported aggregates to and from construction site and stockpile yards shall be always covered to AVOID dust impacts on road users and or overflowing of aggregate materials onto the road.	Yes	✓	PMU: Materials are transport in closed bags, avoiding dust generation and spill
		Speed limit is observed via feeder routes for transportation of materials and machinery to and from the construction site.	Yes	☒	PMU: No speed limit signs erected in ends of feeder road, even the site gates.
		No service or repair of machines or vehicles should take place inside the water reserve areas	Yes	✓	
Environmental incident reporting & corrective actions	Report of any incidents submitted to PIC/PMU, ECD and relevant sectors	Report within 24 hrs to the concerned party on incidents and measures conducted temporarily to mitigate/solve the incident	Yes	☒	PMU: Past incidences did not follow this procedure. Action: Contractor to do this in future incidences if occur
	Avoid any type of works that would cause incidences Contractor/PMU	No hazardous materials including paint, oil, fuel and lubricants must spill at the construction, stockpile and laydown area.	Yes	✓	
		Any spill/leak incident shall be addressed immediately and reported to MELAD - ECD within 24 hrs of the incident occurrence.	Yes	☒	PMU: 24 hrs informing key stakeholders is not currently practiced. Action: To informed relevant stakeholders of the incidence(s) within 24 hrs.
Environmental permits or clearances follow-up	Comply with the Conditions of the Import permits - Contractor	Obtained license for every imported project material	Yes	✓	PMU: Licenses and approvals should be obtained before the materials enter the country. So assumption that all have been approved. Action: Contractor to provide approval docs and or licenses for all imported materials.

Climate and disaster risk integration checks	No excessive emission of carbon dioxide and black smoke for the project's operation Contractor	Machinery/equipment and vehicles used shall be regularly inspected for maintenance to ensure they do not emit excessive black smoke. Emitting excessive black smoke for more than 5 secs shall not operate but shall be serviced for repair work until smoke problem is fixed.	Yes	✓	
SOCIAL SAFEGUARDS checklist – Construction phase.					
Social Requirements	Actions	Required actions and mitigation measures	Pre check	On site	Comments
Grievance Redress mechanism	GRM box established and functional?	The GRM box is established but needs to be more visible to the public for transparency and easy access	Yes	No	GRM Box needs to be relocated to the front gate to ensure its visible to the public and can be used to its full potential. Response: We're trying to find a good place to locate it with the shelter from rain and with easy access
	Are the Contact details for grievance officers displayed at site – clear to the public?	GRM Contact information displayed but needs to be clear and updated.	Yes	Yes	Yes but its fading due to the heat., it needs to be renewed. Response: Will renew the contact information
	Are grievances recorded, Addressed promptly, and tracked until resolution.	All grievances and interactions are recorded promptly and addressed.	Yes	Yes	Yes the contractor liaison person is very active to address GRMs and record all interactions on site.
Labor and working conditions	Are all workers hired based on fair and transparent procedures.	All workers are hired following the CEMP requirements of fair and transparent procedures to the community.	Yes	Yes	All workers follow the Bonriki Village recruitment system.
	Have the workers received induction, PPE and H&S Training?	Workers have received training but another training Follow up training is needed to be executed.	YES	Yes	A recent training was conducted early June to the old and new workers by the Gender officer and the labour office. complied
	Is the workforce gender inclusive, with opportunities for women prioritized?	Yes, this criteria is now well known throughout construction and Bonriki for the ADB requirements.	Yes	Yes	
Community health and safety	Is the project site fully fenced and marked with signage in local language?	The STREP site is now fully fenced but both gates are still accessible by the public.	Yes	Yes	
	Are the mitigation measures in place to manage traffic, dust and noise?	Signages present on site.	Yes	Yes	Signages need to be more visible to the public, need to be on the fence entrance and Exit gate. Response: Signage has been put up in requested position
	Warning construction signs	Warning and construction signs should be put up to avoid future issues with the public, passerbys and the contract workers.	Yes	Yes	Yes, but need more in both languages to ensure that public and community know that the project is concerned for their safety Response: Will Renew and can observe next inspection.
	Have public safety risks been assessed and addressed? (Fencing around the Cemetery)	Fencing around the cemetery has been erected but needs to be fully closed.	No	No	This is pending till fence is fully closed. This allows this family to allow more time for easy access to the backgate for exit.
Worker's safety	Are all the workers fully equipped with Full PPE?		Yes	Yes	Complied
	Fire prevention tools: Is there a fire extinguisher on site?		No	No	Contractor to ensure one is on site for the safety of the workers and equipment on site. Response: Will prepare

	Fresh and clean drinking water	Yes	Yes	Complied.
	Toilet Facilities	Yes	yes	
	Rest area	Yes	Yes	A buia on site is used by the workers as a resting area.
	Health and Safety Policy		Yes	Refer to the code of conduct
	Health and Safety programs		Yes	Training conducted in June
	Community liaison records.		Yes	Rotina kept a record for small interactions with the workers and the villagers.
	Womens involvement and working conditions.		Yes	Around 30% of the women engagement in local workforce.
	Community access routes maintained.		Yes	The route is reserved for the family stay in the middle (next to the cemetery).
Health and medical Safety	A first aid kit shall be available on site and Contractor shall ensure that the medical kits are still usable and not expired.		Yes	In the temporary office
	Contractor should report all accidents and near misses to PUB within 5-15 minutes of incident happening.		Yes	Most of the accidents we have on site are the pipe breaking. The site team will contact PUB water department immediately and we will maintain a written incident report.
Worker induction and Training	New worker safety and health training. All new workers must receive worker induction and training.		Yes	Induction done in June
	Environment Induction training (CMP PG28)		Yes	Same as above
	Awareness training		Yes	Same as above
	Emergency training		Yes	Same as above

AGREED MEASURES AND WAYS FORWARD – ON SITE **Environment Concerns and agreed way forward.**

- Sophie to email clarifications on why the transformer foundation work is deeper than the designed plan.
- Rotina to provide incident reports today
- Contractor (Rotina) to Install and or erect signage (speed limits, etc) at each gates
 - by next week Friday (4th July 2025)
- Contractor (Rotina) to have in place 'Labelled rubbish bins' – due date week of 8th July
- Contractor to provide licenses/approval docs for the imported materials (sand, plywoods, aggregates, etc) for safeguard recording and reporting purposes – due date 4th of July 2025.

- Contractor (Rotina) to have in place 'Labelled rubbish bins' – due date week of 8th July
- Contractor to provide licenses/approval docs for the imported materials (sand, plywoods, aggregates, etc) for safeguard recording and reporting purposes – due date 4th of July 2025.

Social Concerns and agreed way forward.

- PMU to follow up if the salary concern has been solved and reflected in the coming payday 27/06/25.
- GRM box to be more visible to the public and workers and established on the entrance gate.



Attachment 2: Environment findings photos

Photo 1: Storm water trapped.



Annex 1b. Audit Findings Justification Report.

On Wed, 9 Jul 2025, 3:41 pm 刘卓描, <liuzhuomiao@sinosoarhybrid.com> wrote:

Mauri Tavita,

I hope this email finds you well.

1. For the Transformer shadings:

Please find attached the analysis of the transformer shading. The animation illustrates the shading effect during the lowest sun azimuth (winter solstice) from last year. As you can see, minor shading occurs only before 7:30 and after 17:30. During peak generation hours (11:00–16:00), there is no shading at all.

Additionally, the comparison report between “with shading” and “without shading” scenarios indicates that the difference in power generation for the two affected inverters is less than 0.5%. Given that there are 13 inverters across the entire site, the overall impact is negligible.

Therefore, based on this analysis, the shading caused by the transformer will not affect the power output.

Regarding your concern that the transformer might be too close to the PV tables behind it — please note that our tables are facing north and mounted 1 meter above the ground. As shown in the animation, the sun's path only causes narrow, elongated shadows on the two lateral sides of the transformer, without affecting the modules.

2. For the Transformer Foundation Explanantion:

The minimum burial depth for 11 kV cables is 700 mm. If the burial depth is shallower than 700 mm, the risk of mechanical damage increases, and heat dissipation becomes less stable due to the shallow soil, which is more susceptible to rainfall and temperature fluctuations.

Therefore, it is preferable to maintain the burial depth before the cable enters the foundation. Additionally, we aim to minimize cable bending to avoid stress damage. Beneath the foundation, a 10 cm lean concrete layer is also required. Consequently, the excavation depth needs to be approximately 1 meter.

For the entire project, only these two foundations require excavation deeper than 700 mm, which constitutes a small portion of the overall project area.

Please feel free to reach out if you have any questions or need further information.

Kind regards,

Sophie

Annex 2: Incidents Reports.

DESCRIPTION:	INCIDENT NO.
--------------	--------------

05 Incident Details (Contract Manager)	Location: STREET SITE
	Severity: Medium
	Has a similar incident occurred previously: YES/NO
	Was it reported? YES/NO
	Details: Incident happened December 2024, the female labor and witnesses did not report it, the female labor with an accident went home and put some ice-blocks on her.
	Environmental Impact:
	Remediation: Wear helmet all time especially while working under mounting structure.
	Pictures (After):

06 Other Details (By Site Manager)	The person in charge of at the time, his/her position: Roger (subcontractor)
	Has he/she verified the details? YES/NO
	Give any names of witnesses of the occurrence: Teaaoi, Tamware

07 Site Managers Report (By Site Manager)	Investigation Commenced:
	Incident reported:
	Were you advised of the incident within 24hrs of occurrence? YES/NO
	Comments: Incidents been resolved

DESCRIPTION:	INCIDENT NO.
--------------	--------------

05 Incident Details (Contract Manager)	Location: STREET SITE
	Severity: Medium
	Has a similar incident occurred previously: YES/NO
	Was it reported? YES/NO
	Details: Incident happened December 2024, the female labor and witnesses did not report it, the female labor with an accident went home and put some ice-blocks on her.
	Environmental Impact:
	Remediation: Wear helmet all time especially while working under mounting structure.
	Pictures (After):

06 Other Details (By Site Manager)	The person in charge of at the time, his/her position: Roger (subcontractor)
	Has he/she verified the details? YES/NO
	Give any names of witnesses of the occurrence: Teaaoi, Tamware

07 Site Managers Report (By Site Manager)	Investigation Commenced:
	Incident reported:
	Were you advised of the incident within 24hrs of occurrence? YES/NO
	Comments: Incidents been resolved

DESCRIPTION:	INCIDENT NO.
--------------	--------------

08 Project Managers Report (By Contract Manager)	Action taken to prevent reoccurrence:
	Signed: <i>[Signature]</i> Jin Date:

ENVIRONMENT INCIDENT REPORT

DESCRIPTION:	INCIDENT NO.
--------------	--------------

Attach additional information if insufficient space.

01 Employer Details (By Site Manager)	Employer
	INSTEC-SINOSAR CONSORTIUM
	Address
	Bonnik, South Tarawa

02 Workers Details (By Site Manager)	Surname
	Sunlight Company
	Given Names
	Occupation
	Subcontractor Construction Team

03 Time of Incident (By Site Manager)	Time of Accident
	16 May 2025 (Friday)
	Location of Accident
	STREP

04 Incident Details (By Site Manager)	What was the nature of the Incident?
	Property damage
	What was wrong or what broke down?
	PUB underground water Pipe
	What was affected by the incident?
	Water Pipe
	Describe how the incident was caused?
	Trench machine hit the Pipe
	Has the incident been resolved? Yes or No? When?
	Yes
	Pictures (Occurrence):

DESCRIPTION:	INCIDENT NO.
--------------	--------------

05 Incident Details (Contract Manager)	Location: STREP SITE
	Severity: Medium
	Has a similar incident occurred previously: YES/NO
	Was it reported? YES/NO
	Details: The PUB Underground Pipe is broken before on STREP site
	Environmental Impact: Influence PUB water department work, affect the work on site.
	Remediation: Fix the PUB water pipe immediately.
	Pictures (After):

06 Other Details (By Site Manager)	The person in charge of at the time, his/her position: Kaake
	Has he/she verified the details? YES/NO Yes
	Give any names of witnesses of the occurrence: Viane

07 Site Managers Report (By Site Manager)	Investigation Commenced: 16 May 2025
	Incident reported: 16 May 2025
	Were you advised of the incident within 24hrs of occurrence? YES/NO Yes
	Comments:

DESCRIPTION:	INCIDENT NO.
--------------	--------------

08 Project Managers Report (By Contract Manager)	Action taken to prevent reoccurrence:
	Signed: [Signature] Jin Date: 16 May 2025

ENVIRONMENT INCIDENT REPORT

DESCRIPTION:	INCIDENT NO.
--------------	--------------

Attach additional information if insufficient space.

01 Employer Details (By Site Manager)	<table style="width: 100%;"> <tr> <td style="width: 20%;">Employer</td> <td>INTEC-SINOSAR CONSORTIUM</td> </tr> <tr> <td>Address</td> <td>BONRIKI, South Tarawa</td> </tr> </table>	Employer	INTEC-SINOSAR CONSORTIUM	Address	BONRIKI, South Tarawa
Employer	INTEC-SINOSAR CONSORTIUM				
Address	BONRIKI, South Tarawa				

02 Workers Details (By Site Manager)	<table style="width: 100%;"> <tr> <td style="width: 20%;">Surname</td> <td>Sunlight Company</td> </tr> <tr> <td>Given Names</td> <td></td> </tr> <tr> <td>Occupation</td> <td>SubContractor Construction Team</td> </tr> </table>	Surname	Sunlight Company	Given Names		Occupation	SubContractor Construction Team
Surname	Sunlight Company						
Given Names							
Occupation	SubContractor Construction Team						

03 Time of Incident (By Site Manager)	<table style="width: 100%;"> <tr> <td style="width: 20%;">Time of Accident</td> <td></td> </tr> <tr> <td>Location of Accident</td> <td>STREP site</td> </tr> </table>	Time of Accident		Location of Accident	STREP site
Time of Accident					
Location of Accident	STREP site				

04 Incident Details (By Site Manager)	<table style="width: 100%;"> <tr> <td style="width: 20%;">What was the nature of the incident?</td> <td>Property damage</td> </tr> <tr> <td>What was wrong or what broke down?</td> <td>PUB Underground Water Pipe</td> </tr> <tr> <td>What was affected by the incident?</td> <td>PUB water Pipe</td> </tr> <tr> <td>Describe how the incident was caused?</td> <td>The Crow bar hit the Pipe</td> </tr> <tr> <td>Has the incident been resolved? Yes or No? When?</td> <td>Yes</td> </tr> <tr> <td colspan="2">Pictures (Occurrence):</td> </tr> </table>	What was the nature of the incident?	Property damage	What was wrong or what broke down?	PUB Underground Water Pipe	What was affected by the incident?	PUB water Pipe	Describe how the incident was caused?	The Crow bar hit the Pipe	Has the incident been resolved? Yes or No? When?	Yes	Pictures (Occurrence):	
What was the nature of the incident?	Property damage												
What was wrong or what broke down?	PUB Underground Water Pipe												
What was affected by the incident?	PUB water Pipe												
Describe how the incident was caused?	The Crow bar hit the Pipe												
Has the incident been resolved? Yes or No? When?	Yes												
Pictures (Occurrence):													

DESCRIPTION:	INCIDENT NO.
--------------	--------------

05 Incident Details (Contract Manager)	<table style="width: 100%;"> <tr> <td style="width: 20%;">Location:</td> <td>STREP Site</td> </tr> <tr> <td>Severity:</td> <td>Medium</td> </tr> <tr> <td>Has a similar incident occurred previously: YES/NO</td> <td></td> </tr> <tr> <td>Was it reported? YES/NO</td> <td>YES</td> </tr> <tr> <td>Details:</td> <td>The PUB underground Pipe is broken before on STREP site.</td> </tr> <tr> <td>Environmental Impact:</td> <td>Influence PUB water department work</td> </tr> <tr> <td>Remediation:</td> <td>Fix the gutter PUB water Pipe as soon as possible</td> </tr> <tr> <td colspan="2">Pictures (After):</td> </tr> </table>	Location:	STREP Site	Severity:	Medium	Has a similar incident occurred previously: YES/NO		Was it reported? YES/NO	YES	Details:	The PUB underground Pipe is broken before on STREP site.	Environmental Impact:	Influence PUB water department work	Remediation:	Fix the gutter PUB water Pipe as soon as possible	Pictures (After):	
Location:	STREP Site																
Severity:	Medium																
Has a similar incident occurred previously: YES/NO																	
Was it reported? YES/NO	YES																
Details:	The PUB underground Pipe is broken before on STREP site.																
Environmental Impact:	Influence PUB water department work																
Remediation:	Fix the gutter PUB water Pipe as soon as possible																
Pictures (After):																	

06 Other Details (By Site Manager)	<table style="width: 100%;"> <tr> <td style="width: 20%;">The person in charge of at the time, his/her position:</td> <td>Viane, Supervisor</td> </tr> <tr> <td>Has he/she verified the details? YES/NO</td> <td>Yes</td> </tr> <tr> <td>Give any names of witnesses of the occurrence:</td> <td>Eteta, Kaake</td> </tr> </table>	The person in charge of at the time, his/her position:	Viane, Supervisor	Has he/she verified the details? YES/NO	Yes	Give any names of witnesses of the occurrence:	Eteta, Kaake
The person in charge of at the time, his/her position:	Viane, Supervisor						
Has he/she verified the details? YES/NO	Yes						
Give any names of witnesses of the occurrence:	Eteta, Kaake						

07 Site Managers Report (By Site Manager)	<table style="width: 100%;"> <tr> <td style="width: 20%;">Investigation Commenced:</td> <td>21/02/2025</td> </tr> <tr> <td>Incident reported:</td> <td>Same day incident occurs 21/02/2025</td> </tr> <tr> <td>Were you advised of the incident within 24hrs of occurrence? YES/NO</td> <td></td> </tr> <tr> <td>Comments:</td> <td>Incidents been resolved</td> </tr> </table>	Investigation Commenced:	21/02/2025	Incident reported:	Same day incident occurs 21/02/2025	Were you advised of the incident within 24hrs of occurrence? YES/NO		Comments:	Incidents been resolved
Investigation Commenced:	21/02/2025								
Incident reported:	Same day incident occurs 21/02/2025								
Were you advised of the incident within 24hrs of occurrence? YES/NO									
Comments:	Incidents been resolved								

DESCRIPTION:	INCIDENT NO.
--------------	--------------

08 Project Managers Report (By Contract Manager)	Action taken to prevent reoccurrence:
	Signed: Jin 李学刚 Date: 2025.2.24

Annex 3: Importation and Quarantine Permits.

KIRIBATI GOVERNMENT



MINISTRY OF ENVIRONMENT, LANDS & AGRICULTURAL DEVELOPMENT AGRICULTURE AND LIVESTOCK DEPARTMENT

PERMIT TO IMPORT SOIL, SAND & GRAVEL

TO: SmartTrade Co., Ltd
Betio Tarawa,
Phone: (686) 73022888
Email: admin@hananjik.com

Permit No: 03/25
Permit Type: Multiple

Subject to the provisions of the **Biosecurity Act 2011**, and to the conditions endorsed below, permission is granted to you to import sand and aggregate.

Country of Origin & Name and Contact Details of Supplier	Name of Item	Quantity (tons)
People's Republic of China	Aggregates Sand	10,000 10,000
Shanghai Queensland Global Trade & Commercial Co., Ltd through De'an County Yongfei Mining Co., Ltd. Flourite Mine in De'an Country, Jiujiang City, Jiangxi province		

Import Conditions:

General Conditions

- The following import requirements apply to aggregates and sand to be imported from China into Kiribati as construction materials only.
- A biosecurity import permit issued by the Ministry of Environment, Lands and Agricultural Development (MELAD) is required and must be received by an importer prior to importing construction sand and aggregates into Kiribati.
- All consignments are subject to inspection on arrival at the first port of call to verify compliance with import conditions before release.
- The consignment will only be released once a Biosecurity Officer is satisfied that it is free from contaminants and import conditions have been applied accordingly.
- If live insects, seeds, weeds and other contaminants are detected during inspection, the consignment will be placed on hold, and an assessment of the biosecurity risk will be made by Biosecurity Services of Kiribati. Options available for the importer may include release, further identification, treatment, re-export or disposal. Any required action will be at the Importer's expense.
- If detected contaminants are determined to be of biosecurity concern, the consignment will require remedial action to remove or treat the contaminants and will require re-inspection. If the contaminants cannot be effectively removed or treated, the consignment must be re-exported or disposed of. Any required action will be at the Importer's expense.

Import Requirements Prior to Shipment from China:

Sand & Aggregate Extraction

- Aggregates (stones) should be extracted as limestone from a registered quarry or inland mining source within China.
- Stone mining company must have a valid mining license issued by the Ministry of Natural Resources of the People's Republic of China.
- A quarry or mining area must be cleared of topsoil, seeds and roots, shrubs and trees.
- Limestones must be clearly exposed to minimize or eliminate biosecurity contaminants.
- Sand should be extracted from a river or other inland sources from the depth of more than 3 meters below the ground surface.
- The river or inland source must be clear of topsoil and debris of plant origin.
- Sand and aggregates should be taken from a depth of more than 3 meters below ground surface.
- In areas where limestones are above ground level, the limestones must be freshly exposed and clear of soil and debris of plant origin.

Washing & Sorting

- Chipped aggregates & sand must be washed with clean water. Debris of plant origin such as leaves, roots, weed seeds, soil and pests must be removed during washing before the consignment undergoes further processing.
- Sand & aggregates must be transported as soon as practicable or for not longer than 3 days from the washing & sorting area to prevent the introduction of new contaminants, hence maintain biosecurity integrity of the consignment.
- Cleanliness and movement of machinery, vehicles and items into and between the field and different processing stages must be strictly controlled to ensure biosecurity integrity of the consignment.

Packing

- A tarpaulin must completely cover the packing area immediately prior to sand & aggregates arrival and unloading at a designated packing area until packaging is complete.
- Packing must be carried out as soon as sand & stones are received at the packing area to prevent the introduction of new contaminants.
- Aggregates and sand must be packed in clean and new packaging materials.
- Packaging materials should be permeable to allow methyl bromide gas penetration through sand and aggregates during fumigation. Non-permeable bags must be left open during fumigation or punctured to allow methyl bromide gas flow.

Treatment Options

- Each consignment of sand and aggregates (stone) must undergo one of the treatment options below if extracted from the depth of and less than 3 meters and below ground surface.

- Fumigation with Methyl Bromide.** Where sand and aggregates are mixed, fumigation rate for sand must be applied otherwise separate fumigation must be carried out according to the following rates:

a. a)	Sand	≥ 21 degree Celsius	150g per cubic meter	72 hours
b. b)	Aggregate	≥ 21 degree Celsius	70g per cubic meter	72 hours

II. Heat Treatment

a) Moist Heat – Heat treatment at a minimum of 40% humidity, to 100°C for 25 minutes or 85°C for 15 hours

OR

b) Dry heat treatment to a minimum of 100°C for 16 hours; or 121°C for 2 hours; or 154 °C for 30 minutes.

17. All treatments must be conducted by a recognized and licensed treatment provider.
18. All treatments must be completed immediately prior to shipment or for not longer than 21 days prior to shipment.
19. Each consignment of sand and aggregate extracted from a depth greater than 3 meters below the ground surface does not need to undergo any treatment but must be accompanied by the Manufacturer's Declaration confirming details under 21 (a) and a Test Report confirming details under condition 21 (b).

Certification:

20. An original fumigation certificate endorsed and issued by a recognized treatment company and countersigned by General Administration of China Customs – Exit and Entry Quarantine Inspection Division must accompany each treated consignment of rock, sand & aggregates into Kiribati. A fumigation certificate must clearly state the following information:
 - o Name of the person, treatment company who carried out the fumigant
 - o quantity in no. of bags, weight per bag (kg) and total weight
 - o container/shipment number & expected date of departure from China
 - o date on which treatment commences & treatment completion date
 - o fumigant used and dosage, temperature achieved and duration of treatment
21. a) The Manufacturer's Declaration confirming:
 - o that sand/stone has been extracted from a depth of more than 3 meters below ground surface
 - o that sand and stone is free from leaves, roots, weed seeds, soil and pests
 - o the mining company's name and address;
 - o quantity in no. of bags, weight per bag(kg) and total weight
 - o the unique product identification number
- b) An original Identification or Test Report, endorsed and issued by the Ministry of Natural Resources of the People's Republic of China; signed by both the test reviewer and approver confirming:
 - i) the name and description of the parent material
 - ii) the mining company's name and address
 - iii) the test date

Date & Stamp
Expiry Date:



Signed: _____
Deputy Director of Agriculture

KIRIBATI GOVERNMENT



MINISTRY OF ENVIRONMENT, LANDS & AGRICULTURAL DEVELOPMENT
AGRICULTURE AND LIVESTOCK DIVISION

PERMIT TO IMPORT PLANT PRODUCTS

TO: INSTEC-SINOSOAR Consortium
STREP – Public Utilities Board
Betio, Tarawa
Phone: (686) 73024634/73020817

Permit Number: 17/25
Permit Type: Multiple

Subject to the provisions of the **Biosecurity Act 2011**, and to the conditions endorsed below, permission is granted to you to import the following plant products.

Scientific Name	Common name	Quantity (m ³ /Kg)	Country of Origin Name & Address of Supplier
<i>Populus spp.</i>	Plywood (Poplar wood)	8,000 kg	Republic of China Wen'an Yuanlin Wood Industry Co., Ltd. Hebei Province, China.

GENERAL REQUIREMENTS:

1. Importation without an import permit shall be illegal.
2. Consignments of partially and/or non-processed wood products as specified under types of timbers must be accompanied by an **original Phytosanitary certificate** endorsed by the National Plant Protection Organization (NPPO), certifying that the import requirements under specific conditions 1 through to 7 have been applied accordingly.
3. Consignments of Processed Wood products specified under types of timber, must be accompanied by an *original Fumigation Certificate* or other related treatment documents specified under specific condition 3 that is *countersigned* by the National Plant Protection Organization.
4. Re-export timber and timber products should have met the import requirements for the People's Republic of China (PRC) and should be stated well on the Phytosanitary Certificate
5. All consignments must be free from pests and diseases, soil and/or holes and insect droppings.
6. Wood packaging materials must be debarked, free from pests and other contaminants and must be well prepared and labelled in line with ISPM 15.

7. Upon arrival in Kiribati, the consignment will be inspected by Biosecurity Inspectors with the availability of an original Phytosanitary Certificate, an original Fumigation Certificate and a copy of the import permit.
8. Failure to comply, the consignment will be re-exported or detained for destruction at the port of entry at the importer's expense

SPECIFIC REQUIREMENTS apply to the following categories:

- a. *Partially/Non processed timber products such as:* Timber (including lumber) that has been roughly sawn into a desired size exceeding 200mm in thickness; unfinished timber that is machined into a desired shape and can be dressed (smooth surface)
- b. *Processed timber products:* Plywood sheets, particle board, oriented strand board or veneer and laminated veneer sheets/panels used in construction, flat-pack homes or kits, very thin wood (6 mm or less), engineered wood joints and beams made solely of plywood or laminated veneer lumber that do not contain solid timber.

1. All consignments must be properly inspected before shipment and necessary actions should be undertaken where possible to ensure they are free of:
 - (i) leaves
 - (ii) bark
 - (iii) fungi
 - (iv) insects
 - (v) soil
2. All timber and timber products consignments (under **category a and b**) must have undergone wood drying as part of wood processing at high temperatures ranging between 130 – 150 °C for a period of 3 – 4 continuous hours at 70% air humidity within the dryer. This requirement should be indicated on the accompanying Phytosanitary Certificate.
3. All timber and timber product consignments fall under **categories a and b** should undergo fumigation according to the recommendations below to kill pests (including storage pests) associated with the timber. The chemical used and dosage applied should be indicated on the accompanying Phytosanitary Certificate
- i. Fumigation with methyl bromide at normal atmospheric pressure at a rate of 48 g/m³ for 24 hours at 21°C or above. For each 5° C fall in temperature below 21° C, 8g/m³ must be added to the dosage 21° C or above or as indicated on the following scale:

21° C and above is 48 g/m³
16 – 20 ° C is 56 g/m³
11 – 15 ° C is 64 g/m³
10 ° C is 72 g/m³

- The fumigation provider must record the temperature information on the fumigation certificate
- Fumigation with methyl bromide should not be carried out at temperature below 10 ° C

- The target of fumigation must not be wrapped or coated with materials that are impermeable to methyl bromide

OR

- ii. Fumigation with sulphuryl fluoride (Vikane) at normal atmospheric pressure at a rate of 64 g/m³ for 16 hours at 21°C or for 24 hours at 15.5 °C

OR

- iii. Heat treatment at a minimum temperature of 56 °C for 30 minutes, measured at the core of the goods to kill pests (including storage pests) associated with the timber products.
4. The Fumigation Certificate should be provided for any treatment of consignment undertaken, indicating the minimum temperature and/or dosage for any chemical applied.
5. Fumigation of timber and timber products for export into Kiribati should be supervised and Fumigation Certificate should be countersigned by an approved Officer of Animal and Plant Quarantine Department, People's Republic of China General Administration of Customs.
6. Any treatment performed must be completed no more than 21 days prior export and all treatments must be carried out by the treatment provider accredited by the NPPO of the exporting country

The consignment must be closely monitored, and storage must ensure integrity and security to prevent re-composition and re-infestation before export.

Date of Issue
Expiry Date



Signature:

Director of Agriculture

Annex 4: Consultations

4a: SEP update

No.	Objectives	Target Stakeholders	Messages/Agenda	Means of Communication	Schedule/Frequency	Responsible Agencies/Groups	Resources	Reporting	STATUS
1	Affected persons are meaningfully consulted on compensation and assistances to be provided before commencement of civil works.	Asset owners and affected persons	Resettlement Plan, schedule of payment of compensation or assistances, other mitigation measures and GRM	Face-to-face meetings, group meetings, letters, phone calls, project brochure, GRM.	As needed and when draft Updated Resettlement Plan is prepared, and during payment of compensation and provision of assistance	PMU and MELAD	Printed handouts, presentations, CEFs.	PMU quarterly report and semi-annual safeguards monitoring report.	ONGOING.
2	Awareness of importance of sustainable use of natural resources.	Island community	Value of the solar project and the water reserve to the island	Presentations at schools, posters, notice boards, public radio, and consultations with CSOs and community groups.	Pre-construction phase	PMU, MISE and MELAD with support from the PIC	Presentations, handouts, posters, graphics.	PMU quarterly report.	Preparations ongoing and will be reported in next reporting period. The Communications officer was only just Recruited in June.
3	Gender inclusive public awareness on enhancing women's role in the project	Island community	Impacts and benefits of women's role in project activities, design, construction and operation.	Consultations with CSOs and community groups, meetings within PUB, Contractor and MISE, posters, radio and notice boards.	Pre-construction stage with one update after six months	MISE, PUB and Contractors	Presentations, handouts, posters, graphics.	PMU quarterly report, GAP progress reports.	ongoing. This is being incorporated into every awareness being conducted.
4	Inform South Tarawa residents about construction contractor	Bonriki and nearby residents, PUB	Project construction program, schedule, and outcome, employment	PUB and Government notices, public consultation	Prior to construction commencement and updates	PMU with assistance from PIC	Public radio and notice boards.	PMU quarterly report.	completed - Marh 21 2024.

No.	Objectives	Target Stakeholders	Messages/Agenda	Means of Communication	Schedule/Frequency	Responsible Agencies/Groups	Resources	Reporting	STATUS
5	Gender-inclusive public awareness of EMP monitoring and GRM.	Bonriki and other residents.	EMP monitoring and GRM procedures.	Public consultation with community.	Early in project construction phase.	Implementation contractor. Oversight from PIC	Printed handouts and posters.	EMP and GRM records and reports	completed - Marh 21 2024, October 10th, 2024 and June 2nd 2025.
6	Capacity building among project staff and contractors	Project staff, contract workers and O&M employees	Awareness of renewable energy, gender issues, labor standards, health and safety, anti-sexual harassment	Training and posters	At least two sessions during construction phase, with 100% of contractors	Implementation contractor	Training materials and posters	PMU quarterly report, GAP progress reports.	will be held in the 3rd Quarter.
7	Awareness of efficient household electricity demand management.	Women's youth and church organizations	Efficient household electricity demand management	Workshops, poster and radio	One time during construction phase.	MISE, PUB in collaboration with MWYSSA and AMAK	Presentations, handouts and posters	PMU quarterly report, GAP progress reports.	pending.
8	Capacity building on photovoltaic and BESS technology	Key community stakeholders and representatives	Photovoltaic and BESS technology and related operation and maintenance	National workshop	One time during construction phase.	MFED, PMU, MISE, PUB	Presentations and handouts	PMU quarterly report, GAP progress reports.	pending.
9	Support to small business entrepreneurs	Vulnerable affected households and at least 20 women and 10 men.	Income opportunities from electricity supply and business skills	Training	One time during construction phase.	PIC in collaboration with MWYSSA and AMAK	Training materials	PMU quarterly report, GAP progress reports.	pending.
10	Internal project communications	Contractor, Construction Supervisor, PMU, PUB, MFED and	Project-related information, instructions, clarifications,	Regular meetings and reporting, posters, notices	Daily, weekly and monthly during	Contractor, Construction Supervisor, PMU, PUB, PIC, MFED	Forms, templates.	PMU quarterly report	ongoing.

No.	Objectives	Target Stakeholders	Messages/Agenda	Means of Communication	Schedule/Frequency	Responsible Agencies/Groups	Resources	Reporting	STATUS
11	Disclosure of periodic monitoring reports	MFED and ADB	Performance monitoring, including complaints received and resolution	Reports on safeguards performance monitoring, issues resolution and corrective action plans	Quarterly progress reports and semi-annual safeguards monitoring reports	PUB with support from PIC	Reports.	NA	ongoing. 2024 SMR have been disclosed to the public and uploaded to the Ministry of finance Website.
12	South Tarawa ribbon cutting ceremony.	Island community.	Summary of work done and outcome.	Public ceremony and local radio news report.	Construction completion.	PUB and Government.	Ceremony.	PMU quarterly report.	Completed - 27th April 2025.
13	Customer and local PUB staff feedback and error reports.	PUB customers and local staff.	Feedback and error reports.	Verbal to local PUB staff, written reports to PMU and to implementation contractor.	As necessary.	Local PUB staff, PMU, and implementation contractor.	Pencil and paper and electronic records and reports.	PMU reports to implementation contractor regarding any warranty.	pending.

4b: Consultation/ workshop pictures.





South Tarawa Sanitation Project, South Tarawa Water Supply and South Tarawa Renewable Energy project joint consultation – Abarao Village.

VENUE	TIME	DATE OF CONSULTATION
RC MWANEABA	2:00PM – 5:00PM	08 th May 2025
KPC MWANEABA	2:00PM – 5:00PM	09 th May 2025

1. OBJECTIVE AND SCOPE OF CONSULTATION

The consultations' objective is to inform the Abarao communities about the STREP, STWSP, and Sanitation progress, safeguard measures, grievance Redress mechanism GRM process and how communities will benefit from these. These two consultations were conducted in two Abarao communities both the Catholic community and the protestant church community (KPC). Their awareness is very important to the project, before any groundwork starts. This community is treated as immediate receptors of [these project](#).

2. Stakeholder profile:

Both Consultations were dominated by females and their children. A total of 13 total male participants and 43 Women participants. This was profiled as more women were available or seemed more interested to be part of the awareness consultation.

3. Consultation process.

The consultation covered various updates from the three projects – STSP, STWSP, STREP – and the new prepaid meter system, energy saving tips for households from the PUB team.

The consultation team was made up of representatives from each PMU and the PUB team – the STSP Safeguard officers, media and outreach officer, PUB Human resource officer and the STWSP gender officer and KFSU safeguard officer representing STREP in the absence of their safeguard.

The invitations were shared with the Abarao communities by the STSP Media Officer and sent to community leaders to ensure transparency and inclusive participation. This consultation was initiated by the South Tarawa Sanitation project, as the selected site (Abarao) is its Pilot site. To further align with PUB internal coordination strategy for its projects to encourage integrated outreach across its projects – the STWSP and the STREP also participated in this consultation. These two projects coordinated their consultation sharing the same platform to engage the Abarao community and share the updates of their

projects to maximize consultation efficiency across the community, given in future this community will also be part of their site when STWSP GDW2 and STREP Phase 2 start.

The session began with opening remarks from STSP team members, who presented the status of the Sanitation project and explained its safeguards requirements and procedures relevant to the scope of the project. This was followed by the STWSP team, who provided updates on donor partners, project scope and gender related objectives and targets during implementation.

The STREP Presentation outlined both phases of the renewable energy project, highlighting potential environmental and social impacts and the safeguard measure planned to mitigate these during groundworks. The team also introduced Grievance Redress Mechanism (GRM), further explaining how effective individuals and communities can raise concerns.

Finally, the PUB delivered the last presentation on the new prepaid electricity meter system, including guidance on household energy efficiency and cost saving practices for PUB connected customers.

We had a very attentive audience with only one question raised during the two consultations. The question raised was who would be working on the project – would it be locals or international. STWSP and STREP responded ensuring that the subcontract would be local and will liaise with the community prior work start should there be a need for laborers from their village.

4. Appendices.

PARTICIPANT LIST

VENUE: Banateta, Mwanabwa.
 DATE: 28/ May/2025.
 Purpose of the meeting: Abarao Consultation - 1st Round.

	FULL NAME	SIGNATURE	CONTACT	Gender
1	Uchama, Teba	[Signature]	73051751	F
2	Ereche, Kikanga	[Signature]	73059180	F
3	Tobanire, Jatau			F
4	Tamari, Tira			F
5	Maria, Tira			F
6	Takuti, Tira	[Signature]		F
7	Kiana, Teke			F
8	Teama, Tenamau	[Signature]		F
9	Tuluta, Tolcoria	[Signature]		F
10	Ngareimog, Betera	[Signature]	73012339	F
11	Tokdreita, Kabanciti	[Signature]		F
12	Jeanguia, Kereka	[Signature]		F
13	Zamwaga, Anka	[Signature]	73019744	F
14	Banira	[Signature]	75058932	M
15	Enire, Jauati	[Signature]		M
16	Biranika, Nonika	[Signature]	73037046	M
17	Tokoba, Bura	[Signature]	73042320	M
18	Matarena	[Signature]		F
19	Makera, Teem	[Signature]	73081733	F
20	Biruma	[Signature]	73043000	F
21	TIOBA	[Signature]	73079136	F
22	Tamren, Timsai	[Signature]	73077711	F
23	Mwanga, Reo	[Signature]	73094474	M
24	Korah, Wanyam	[Signature]	59089	F
25	Katuma, B. Tira	[Signature]	73089023	F
26	Telirake, Kabana	[Signature]	73059598	F
27	Christina, Reher	[Signature]		F
28	Maka, Aan	[Signature]	73091025	F
29	Kach, Tamar	[Signature]	73075588	M
30	Kurika, Aaron			

Abarao Consultation RC mwaneaba – Day 1 Participation list.

Attendance list

Date : 9/5/2025
 Venue : KPC Mwanabwa
 Purpose of the meeting : Consultation Abarao west

Full Name	Gender	Signature
RUGGAVA, BOB	M	[Signature]
MWAAHWARE, Mwanrungha	F	[Signature]
Kabane, Bwanabati	F	[Signature]
Takuti, Kielo	M	[Signature]
Tube, Tubwira	M	[Signature]
Tolcoria, Niara	M	[Signature]
Rubidong, Wamkaie	F	[Signature]
Turia, Timon	F	[Signature]
Kabo, Aah	F	[Signature]
Katikua, Tangoun	F	[Signature]
Takirio, Rona	F	[Signature]
Tekarima, Joane	F	[Signature]
Turiana, Karatu	F	[Signature]
TIRITOA, KAKA	F	[Signature]
Tera, Mike	F	[Signature]
ROITA, TER'ATERA	F	[Signature]
Rikanako, Jeane	F	[Signature]
Teera, Tebabati	F	[Signature]
Bwatake, Bwity	M	[Signature]
Mamhoda, Tiaon	F	[Signature]
Titon, Tiam	M	[Signature]
Maka, Aaran	M	[Signature]
Christina, Reher	F	[Signature]
Telirake, Tabwira	F	[Signature]
Kareat, Wanyam	F	[Signature]
KIKITA, Aaron Tibwira	F	[Signature]

Abarao Consultation participation list – KPC Mwanabwa



Abarao Consultation RC mwaneaba – Day 1.



Abarao Consultation – KPC mwaneaba day 2



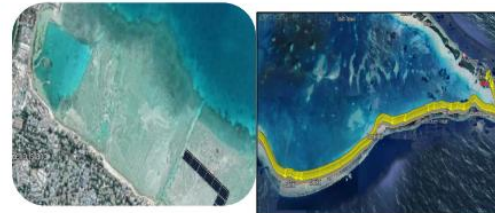
Abarao Consultation Day 2: Introducing the new Prepaid metering system.



Presentation Outline



STREP phase 1



STREP phase 2



STREP 1

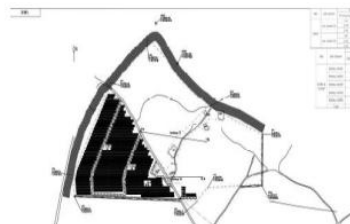
Kerakan kabonganaan te iti man taai man 9% nakon 44%,

Kauarerekean kabonganaan te bwa.

Baika ana riki imin te Karikirake

Kauarerekeam te gas ae biotin man aki kabonganaan te bwa.

Karekean korakoran te iti man taai - 6.43 GWh ao n ibuobuoki n man kaurerekea kabongnaan 1.546 million te rita ibukin kamaeuan tianaraita.



Kanoan te Karikirake

1: Te iti man taai ao te batere

2: Karaoran te tua ibukin te iti ao kaingaa te iti ae itiaki

3. Katamaroan ana konabwai PUB n makurii ao tararuai tibwangana n irekereke ma te iti.



A truck parked in a field
Description automatically generated with med



Mwanenakin te karikirake

Source	Amount (\$ million)	Share of total %
Asian Development Bank Special Funds Resources ADF grant	8.0	54.4
Strategic Climate Fund grant	3.7	25.2
Government of New Zealand, MFAT grant	2.0	13.6
Government of Kiribati	1.0	6.8
Total	14.7	100



STREP 1 implementation progress



STREP 2: Baika ana riki imin te karikirake

Renewable energy generation increased and greenhouse gas emissions reduced in Kiribati.

Generation and productive utilization of climate-adapted renewable energy in South Tarawa increased.

Kanoan te Karikirake

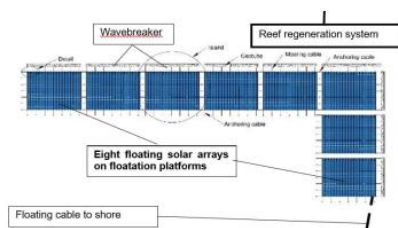
1: Climate-resilient floating solar photovoltaic (FPV), Battery energy storage system (BESS), and grid infrastructure installed.

2: Adaptive low-carbon productive use of energy infrastructure installed.

3: Institutional strengthening implemented.

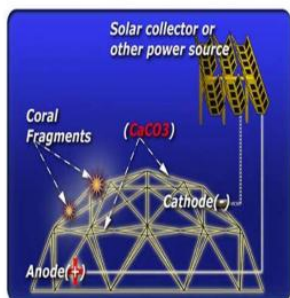
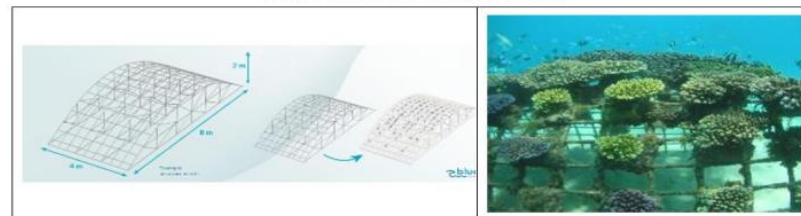


1: Climate-resilient floating solar photovoltaic (FPV), Battery energy storage system (BESS), and grid infrastructure installed.

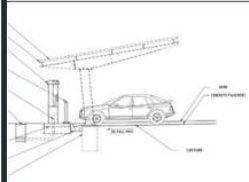


1: Climate-resilient floating solar photovoltaic (FPV), Battery energy storage system (BESS), and grid infrastructure installed.

Figure III-11: Reef regeneration



Source: UN Ocean Conference (2022), Biorock® Electric Reefs
Figure ES1: Elements of a Biorock-reef system (left, as proposed for KIR, right, active)



Adaptive low-carbon productive use of energy infrastructure installed.

STREP 2 Bonganan te Karikirake

- Aikai bonganan te karikirake;
 - FPV+BESS will produce 7,200 GWh displacing around 3.19 Million litres of imported diesel
 - It will offset 5184 ton of CO2 first year, 121,823 for 25 years
 - The transmission line (33 kV) upgrade will allow for STREP/STWSP power to be evacuated from the Bonriki water reserve to loads in south Tarawa all through to Betio.
 - EVs and Charging Stations
 - Public street lighting throughout the island.

STREP 2 proposed site



STREP 2: Mwanenakin te karikirake

	Amount (\$ million)	Share of Total (%)
ADB Special Funds Resources (ADF)	14.90	54.38%
ADB Special Funds Resources (ADF 13 Thematic Pool)	10.00	36.49%
Ireland Trust Fund	0.50	1.82%
Government of Kiribati	2.00	7.30%
Total	27.40	100.00%



Waakinan te Karikirake

Milestones	Expected Completion Date
Bidding	Open 4 th October 2024, close March 2025
Grant negotiations	14 November 2024
Grant approval	December 2024
Issuance of Invitation for Bids and Inception Mission	October-November 2024
Grant effectiveness	March 2025
Contracts award and mobilization	Q2/3 2025



SAFEGUARDS

- Kaongora inanon kaawa.
 - Kamatata iaon karikirake ma makuri ake ana karaoaki.
 - GRM Mechanism. – Kawain te Tangtang ma iango n Tamaroa bukin te karikirake.
 - Kanganga aika a na kona n riki inanon te karikirake.
 - Kabomwi nakon kai n amarake ake ana rootaki.



Kainanoakin te boutoka man te Kauntira ao
kain te kawa.

- Kaongora inanon kaawa,
 - Kamatata iaon karikirake ma makuri ake ana karaoaki.
 - Tangtang ma iango n katamaroa inanon tain te makuri.
 - Kabomwi nakon kai n amaraake ake ana rootaki.



TITIRAKI !!

Annex 5: Bwabwai pit extraction records and total compensation.

Date: 24/07/2025									
Site: STREP Project site, Bonriki.									
Owner details	Bwabwai swamp details								
	No. of Plants harvested	Total Weight in pound (lbs)	Bwabwai compensation rate \$3.00/lbs	Bwabwai pit volume cm^3	volume compensation rate \$5.00/cm^3	Pit owner	Plot number	Total Compensation	status
1. Kaingamone Tioromwaea	98	80.2	240.6	454	2270	Kaingamone Tioromwaea	572a	\$ 2,510.60	Paid - land to reimburse PUB
2. Tamango Tibwan	534	326.8	980.4	109	545	Tamango Tibwan	572e	\$ 1,525.40	paid.
3. Tebwati Tekaitabwa and Kabunang Toauriri	734	1116	3348	157	785	Tebwati Tekaitabwa ma Kabunang	571e	\$ 4,133.00	paid
4. Teera Bwebwetara	340	440.925	1322.775	108	540	Teera Bwebwetara		\$ 1,862.78	Has not claimed.
5. Tooti Arawaia (Female)	0	0	0	83.824	419.12	Tooti Arawaia	571o	\$ 419.12	Paid - land to reimburse PUB
Total								\$ 10,450.90	

ANNEX 5: Grievances Redress Mechanism and Interactions.

Grievances	Complainant	Gender	Date Submitted	STATUS	Actions Taken	Next steps	Due date	Responsible Officer	Tentative Cost
GRM#001 - 1. Boundary dispute	Etita Tebeewa	F	4/10/2024	Closed 18/10/24	1. Visit the Complainant couple of times – move the boundary in wards 8 plus metres from the original proposed boundary.	1. LMD to work with the landowner on the way forward ([PMU to make sure this is happen)	06/09/24 - Friday	PMU	
					2. Meet with LMD to shift boundaries – outcome is for PMU to resolve without eviction (LMD only option is eviction)	2. Visit the complainant and propose plausible options to agree on which boundary to use and agree with (subject to PM and PIC approval)	9/13/2024	LMD/PMU	
					3. PMU have obtained the AG's advice	3. To relay the AG's advice to go ahead with the project (without mentioning the involvement of the police).			
					4. AG's advice delivered to Complainant - 23/09/24	4. LMD to visit the Complainant (friendly approach)	9/20/2024	LMD	
					5. PMU ADB meeting on best way forward.				
2. Dust issue				closed	1. Dust screen have installed but the complainant have issue with the location of the screen installed.	1. Visit the complainant to follow up and try to involve them in the planning to avoid dust (to install dust measurement tool to achieve dust baseline on site, etc.			
						2. Contractor has provided Dust Management Plan - PMU/PIAC to review	9/23/2024		
						3. Dust Measurement Device will be used to detect dust generated from the site (BAU vs outside working hours). - PMU to follow the Contractor date to install/use the device.			
3. raise in Heat/ temperature causing discomfort with adjacent communities				closed	1. go through relevant studies on the raising heat/temperature from solar panels.	1. measure the temperature of the site (now as a baseline) and measure it after 6 weeks) - inside the field area and near the			
						2. to install a dust and temperature barrier (higher wall) - subject to the approval and consent of the communities.			
GRM#002 - Recruitment biasness	Tiireta Tiimon - Bonriki East Councillor.	M	4/9/2024	Case Closed.	Both councils meet with Contractor – 10 from each sides (Tekaaawa and Tekawaiaeboou), 2 of the 20 are female.	Follow up to both councilman from Tekawaiaeboou	09/09/24 - Monday	Contractor/ PMU	

Grievances	Complainant	Gender	Date Submitted	STATUS	Actions Taken	Next steps	Due date	Responsible Officer
GRM#002 - Recruitment biasness	Tiireta Tiimon - Bonriki East Councillor.	M	4/9/2024	Case Closed.	Both councils meet with Contractor – 10 from each sides (Tekaaawa and Tekawaiaeboou), 2 of the 20 are female.	Follow up to both councilman from Tekawaiaeboou	09/09/24 - Monday	Contractor/ PMU
GRM#003 - Land ownership boundary dispute (lack of consultations prior to the commencement of the project, no clarifications prior clearance the lands, no notification prior destruction of plants, no consideration for our health concerns, concern of the long-term effect on heat-rising.	Etita Tebeewa	F	4/30/2024	Closed - 10/18/24	Follow up and inspect if no consultations conducted at the Anraei community - ongoing	Contractor to recruit Community Engagement/Liaison Officer (from Bonriki).	9/13/2024	PMU
					Check the Initial Environment Examination – awareness programs – DONE - there is no consultation in Anraei mentioned in the IEE. (the person involved in the IEE has been ceased - hence cannot refer to him about the inclusiveness of the consultations conducted (especially whether Anraei communities consulted).	Conduct consultations every month with Bonriki communities while establishing convenient platforms to those who impacted the most of the project to complain and to seek clarification.	9/6/2024	PMU
					1. Preparation of the RP consultation - the complainant resident was missed during the door to door approach 2. however everyone were invited during the communal consultation	Consult HoV for this plan – if HoV requires all of Bonriki Consultations, then it will be monthly but weekly for adjacent communities.		
					After the STREP RP cut off date there is a meeting conducted with Anraei community - still the complainant (adjacent communities/family) did not showed up.	See if there are reports on all of these consultations/meetings (record of meetings in Anraei communities).	9/20/2024	Contractor
					Involve Councillors in the prep. and invitations of all the consultations	Record all lessons learnt especially on gaps in conducting consultations.	9/20/2024	Contractor/ PMU
							after meeting with PM, PIC	Contractor/ PMU

Grievances	Complainant	Gender	Date Submitted	STATUS	Actions Taken	Next steps	Due date	Responsible Officer
GRM#004 - Bwabwai Compensation (bwabwai owner hold work until compensation for their bwabwai paid)	Kaabunare Toauriri	M	8/22/2024	Closed 22/10/24	1. Consultation with Bwabwai owner - investigate on the issue and the origin of the complain 2. Bwabwai owner to provide ownership - bwabwai pit was located in a different land (according to LMD map) where there is a land dispute between the bwabwai owner and the land owner.			
					1. meeting with LMD on proper compensation procedures - ownership of the bwabwai 2. forms provided to bwabwai owners (subject to bwabwai owners submission)	Meeting with LMD to see if payment can proceed without bwabwai ownership	9/10/2024	PMU
					meeting with NEPO on the re-warranting of the tree compensation allocation	Assist bwabwai owners		
					STREP compensation to be warranted. (FM)	Update the STREP RP to reflect the new identified bwabwai pit, while continue working on the compensation payment for the other bwabwai pit owners.		
GRM#005 - Labour Wages, increment after three months, holiday rate, KPF, and dirt allowance	Timote Tokarake	M	8/26/2024	CLOSE 30/09/24	1. Contractor meet with the Councillors of both Villages and the head of village.	1. Contractor to translate meeting minutes and have HOV to indicate satisfaction. 2. PMU to follow up with HOV.	before COB this week - 13th September 2024.	Contractor and PMU
						1. Go through the Contract of the contractor - if there is maximum or range of the wage that the Contractor can afford to pay		
						Communicate concerns of the workers to the MEHR.		
						Supplier to put forth variations to accommodate labor increase - with justification (inflation, increase in GoK's minimum wages, etc).		
GRM#006 - Sand and aggregate (Subcontractor sell out sand and aggregate from the site)	Timote Tokarake	M	8/26/2024	Close	1. Contractor and subcontractor meet with the head of the village (Timote Tokarake)	PIC to go through the budget same as above		
							same as above	same as above

Grievances	Complainant	Gender	Date Submitted	STATUS	Actions Taken	Next steps	Due date	Responsible Officer
GRM#007 - Dust emssion, concern for children health, roof dirty from dust - drinking water (dust from the Project site and main road).	Teweia Toatu	M	9/6/2024	CLOSE 19/09/24	(only at resident areas). 2. liaise with KLTA and procedure to have 'slow down signage in Anraei mainroad' 3. raise to Councillor to work with KLTA.	- the amount of water needed to spray water onto meters line away from the impacted households inward to the project site - source of water - schedule of watering the area - to instal dust measurement tool (to get a baseline) and to improve Dust Management Plan - spraying coverage/distance from impacted households 2. Community to post up friendly reminder/signs 'Please Slow - Avoid Dust'	end of this week (13th September 2024).	Contractor, PMU to follow up before the due date.
GRM#008 - 1. Dust Issue,	Meriuta Joseph	F	9/6/2024	Close 19/09/24	same as above	same as above for the dust and same actions/Next Steps with GRM#003 to go through reports and find out record of consultations in Anraei. If none have done to this complainant - consultations on a fortnightly basis with the adjacent community including this complainant will be conducted started next week if not this week.		PMU
2. no prior consultation on the project impact				Closed 19/09/24	PMU visited the complainant showing plans for future consultations at Anraei			
3. Tree Compensation for trees used for food and local medicines.				Closed 19/09/24	Most of the trees cut during the cleaning and even before the cleaning have been paid.	PMU need to check if complainant have trees in their land to be compensated and pay if not already paid.	before 13th September 2024	PMU
						PMU has provided advice on GRM processes and LMD processes		
GRM#009 - workers salary differs from	Timnote Tokarake	M	9/12/2024	Closed:	meeting with the HOV, subcontractor, Contractor and the PMU. 2/12/2024.			
	Takiri lenibwebwe	m	2/12/2024	OPEN	Treated as an interaction as they are merely inquiring on the possiblity of a spare key being handed to them upon full closure of the fence.			

Grievances	Complainant	Gender	Date Submitted	STATUS	Actions Taken	Next steps	Due date	Responsible Officer
GRM #010 - request a spare key to the back gate when fence is fully closed. (INTERACTION)	Takiri lenibwebwe	m	2/12/2024	OPEN	Treated as an interaction as they are merely inquiring on the possibility of a spare key being handed to them upon full closure of the fence.			
GRM #011 - Request compensation for their bwabwai, pandanus and breadfruit tree. They have claimed through lands multiple times in 2024 and have not been compensated to date.		F	19/06/25	Closed : 24th July 2025.	1. Meeting with the Complainant to ensure that she understands the GRM procedures and timelines. 2. Have her fill out the compensation form for lands. 3. Submit to Lands/ PUB. 4. Update the complainant on status.	1. Meeting with the PUB for facilitation of payment.	to be paid by the 2	PMU/PUB
	Tooti Arawaia							

b. Interactions.

13	Visit Local Family	5-Mar-25	Visit the Family living close by the STREP site toward the west gate	the big trucks and transports will enter from that gate, therefore SINO team went to let the family know, and give them contacts number to help them when they have issues regarding opening that	The Family agreed and will contacts SINO team if they have concerns in the future.
14	Visit Local Family Close to STWSP site	25-Mar-25	Regarding the Fence installed for the STWSP	The Family stop the construction, because they want their new path to be prepared since the STWSP site covered their old Path	Two days later, the Subcontractor and their team cleared their new Path and the Family is very happy, the Fencing continued
15	Investigation on incident happened last year December 2024	27-Mar-25	Incident reported late	One female labor forgot to wear hat, she pumped her head with the mounting structure and almost passed out.	The Female labor then wore her helmet to avoid this accident, all labors have helmet on site and always reminded to wear it for safety, especially when they are working under the mounting structure. The female labor doesnt have aftermath effects but took a one day off work after her accident. The Female labor confirmed her fully recovery when interviewed.
16	Fencing team for STWSP site	31-Mar-25	Request from the team members to have a salary raise like other local labors	All of their group members who did the fencing for STWSP site have not got a raise	The salary raise was accessed to their performance, that is why there is a difference in the local labors salary. (Roger advised)
17	Visit to the Cousellor for East Bonriki	10-Apr-25	Discussion for the hiring for some labors	Skilled labors, were hired not through the Bonriki hiring system, which caused the complaint from local villagers from the East	14 April 2025 The follow up for the GRM form was done 14/04/2025, the Cousellor said that he will submit his GRM form later this week.
18	Talk with Local Labors	16-Apr-25	The local Labors asked if there is bonus for dust and oil	They request that when dust is heavy they need to get paid extra	cement and oil bonus will be discussed between Projects manager and Sunlight subcontractor, and then update the local labors when final.

19	Local Labors drinking water	19-Apr-25	Local Labors request for their drink to be provided	With the Environment they are working at, which is too hot and always sunny everyday, they request that their drinks should be provided so that they can easily access water on site and not going back homw for it.	Local labors drink as been provided. A 500L tank was put on site that will be refilled when needed. Local Labors are encouraged to get their drinking water from this tank whenever they need it during work.
20	Interaction with Female Labors	28-Apr-25	Checking on the Female labors how they are doing with their work	No current issues but asked if their will be a bonuses for completing their tasks way before the estimated date.	Already informed team regarding this matter and there is no guarantee for bonuses at the moments.
21	Follow up On Local Labors Salary	5/5/2025	Some Local labors complain that they did not have salary raise while their colleagues has a salary raise, the Local Labors want to know the overtime hours rate and how much they can earn from their overtime hours.	Some local labors confirmed that their overtime hours rate is 1.5 while the other labors said that their overtime is the same with their working hours rate.	Will follow up this coming wednesday (7 May 2025) when they got their timesheets for their salary payment this week Friday.
22	Visited the Taro Pit owner found at the STWSP site	6/5/2025	One Taro pit was found inside the STWSP site that has not been identified before STWSP fencing was done	The Taro Pit has not been compensated to the owners since it just been found recently	The Safeguard officer from the PUB and SINO SOAR officers will discuss the process for the compensation to the Family owners for this remaining Taro Pit.

23	Interaction with Female Labors	15/05/2025	Female substitute	then family member to cover for them, the other Female labors are against this since the substitute should be Female not male.	acceptable to let someone cover for you especially women since all the local labors agreed that if a female labor got sick or need a day off, they will send a female as their cover. This is the same for men, men covering for male labors.
24	Wiring team salary raise	26/05/2025	Talked with the wiring team member	They comments that through their supervisor, they got a raise since he told Roger about their progress and team work.	Local workers are very satisfied with their salary.
25	Local Labors request for having their work reference	5/6/2025	Some Local labors plan to move to outer Islands while others are applying for overseas fruit picking jobs, and their work reference can help support them with their future applications	None	The Local labors are aware that the SINO team with Sunlight team will provide one reference for each local labors that they will cosigned on.
26	Interaction with Local labors	11/06/2025	Some Local Labors request that their salary should be send to their bank account	The local labors want to make use of their bank account before the anz bank blocked their atm account	Kaake suggest them to provide their bank account so that their salary can be deposit straight to their bank account. The local Labors agreed and will provide their consent letter next week monday
27	Interaction with Local labors	12/6/2025	Local Labors are aware that they can get their reference letter whenever they need it		The local labors suggested that they will take their reference letter when they need it/when the work completed
28	Interaction with Local labors	12/6/2025	Inform the local labors that they should provide a signed document to give their permission for their salary to be deposit to their bank acc including their bank details	Local labors will write their permission letter in Kiribati	The local labors will provide their signed documents later today and submit.
29	Ongoing communication with Bwabwai owners regarding the payment of their bwabwai	12/6/2025	Send follow up emails to Kareati regarding the payment for the local family Bwabwai	The payment take time and the Local family always request the status of their bwabwai	Social safeguard PUB confirmed that all the documents have been sent to the Planning team, now we are waiting from their end to give us the update regarding this matter. The Bwabwai owners have been contacted regarding this latest update and will keep posted.
30	Ongoing communication with Bwabwai owners regarding the payment of their bwabwai	13/6/2025	Bwaibwai owners request for their bwabwai compensation to be paid earlier to help with their personal need.	The bwabwai owners have been calling since 30th May 2025 to the Office to follow up on the status of their bwabwai compensation	The Land division already got all the documents needed for the compensation, and now we are waiting for their update. The team always communicate with Bwabwai Owners regularly for this matter.

31	Follow up with the local labor who requested that his salary will be send to his bank account	16/06/2025	The Local labor will hand-written his letter stating his consent for the transfer of his salary into his own bank account not cash.	The worker did not provide his letter this morning but will submit it after lunch today	
33	Received Local Labor Hand written consent letter today	18/06/2025	Salary to be deposited into his bank account	Want to save his money in his bank account	Send a copy for local worker Consent letter to Sunlight team
34	Visited Family at Anraei that are complaining about their Fruit trees compensation that has not been paid	19/06/2025	Complain for their fruit tree compensation	Compensation has not been paid	
35	Bwabwai Pit Owners	1-Jul-25	Follow up on their bwabwai compensation status	Lands Officer went to the outer Island	Kareati will have a meeting with STWSP safeguard tomorrow 2/07/2025 to find alternatives regarding this issue
37	Follow up on Workers Safety helmet	23-Jul-25	Not all workers got their safety helmet	The workers should use a safety helmet on site	Waiting for Sunlights team Way Forward/Update regarding this issue

Annex 6: Audit Outcome letter QTR1



GOVERNMENT OF KIRIBATI
MINISTRY OF ENVIRONMENT, LANDS & AGRICULTURAL DEVELOPMENT
P.O BOX 234, BIKENIBEU, TARAWA
Telephone Number: (686) 752 28000/28425/28211
Email: information@environment.gov.ki

From:	Secretary, Ministry of Environment, Lands and Agriculture Development (MELAD)	To:	Secretary, Ministry of Infrastructure & Sustainable Energy.
File ref:		Attn:	Yu Dian, Contractor Project Manager, INSTEC-SINOSOAR CONSORTIUM.
Date:	05 th August 2025		Site Manager, STREP

**RE: Outcome Letter of Environment Compliance Audit (ECA 01/25) – South Tarawa
Renewable Energy Project (STREP)**

This letter serves to inform you of the findings of the ECA undertaken to your project at Bonriki on the 9th April 2025. The letter outlines an issue and corrective actions that STREP shall undertake to address the findings/issues. The MELAD acknowledges the support and assistance offered by the STREP team, including Project Manager, Contractor and Safeguards officials accompanying the team on site.

Below are the findings identified during the inspection with corrective actions:

1. **Dust screens should be installed around the construction site** – During the inspection, the audit team confirmed that dust screens were installed at the construction site especially where most of the construction work occur near the road and residential areas. However, the project compound is not fully installed with dust screens. Dust screens are not yet installed in areas where work has not yet commenced.

Corrective action: ECD MELAD advised that Dust screen should be fully installed around the construction site once the construction work is undertaken at the sites where the dust screens are not yet installed.

2. **Settling pond for concrete wastewater** – During the inspection the audit team confirmed that the full Settling Pond that was used for concrete wastewater has already been cleaned and emptied.

Corrective action: ECD MELAD advised the contractor to maintain the procedure of cleaning and disposal of the concrete wastewater of the Settling Pond once it full.

3. **Record of all Environmental incidents** - All environmental incidents occurring on site during the construction phase of the project must be reported to ECD-MELAD. On the same date 09th April 2025, the EL Holder submitted the Environment Incident report through email. However, in the Environment License condition 7.3 (a) & (c), the EL Holder is also required to submit the record of Complaints and Monitoring requirements under condition 6.1.

Corrective action: The EL holder is advised to submit the record of complaints (EL condition 7.3 (c)) and Monitoring requirements (EL condition 6.1) for the first quarter and the second quarter 2025. The EL Holder is requested and advised to submit the report within 3 weeks (26th August 2025) upon receiving this letter.

The MELAD would like to advise the Contractor that a failure to comply with the above directives issued to protect the environment would be dealt with in accordance with the provisions of the Kiribati Environment Act 2021. Be advised to provide your responses and reactions on issues identified above upon receiving this letter.

I thank you for your continued cooperation and commitment to safeguard our Kiribati environment and comply with the Kiribati Environment Act 2021. Should you have questions regarding this letter, please do not hesitate to contact us through the address above.

Ko bati n rabwa



Mr Laitele Peletele
OIC, Environment and Conservation Division
For Secretary, Ministry of Environment, Lands and Agriculture Development (MELAD).

